

**Guide Price**  
**£280,000**

**Leasehold**

2x  1x  1x 

**Printwork Apartments,  
London Road, Sutton,  
Surrey, SM3**

**OVER 60?**

Secure this property  
for up to **59% less!**



Video Tour available

**cubitt&west**  
Helping you move forwards





## Main features

- Immaculate apartment in Printworks development
- Lift & concierge service
- Allocated parking, which can be seen from your apartment
- Excellent transport links - within easy reach of Northern Line
- No chain to wait for

## Accommodation

### THIRD FLOOR

Entrance Hall

Lounge: 14'0 x 8'9 (4.27m x 2.67m)

Kitchen: 13'2 x 5'6 (4.02m x 1.68m)

Bedroom 1: 13'9 x 8'6 (4.19m x 2.59m)

Bedroom 2: 9'7 x 8'5 (2.92m x 2.57m)

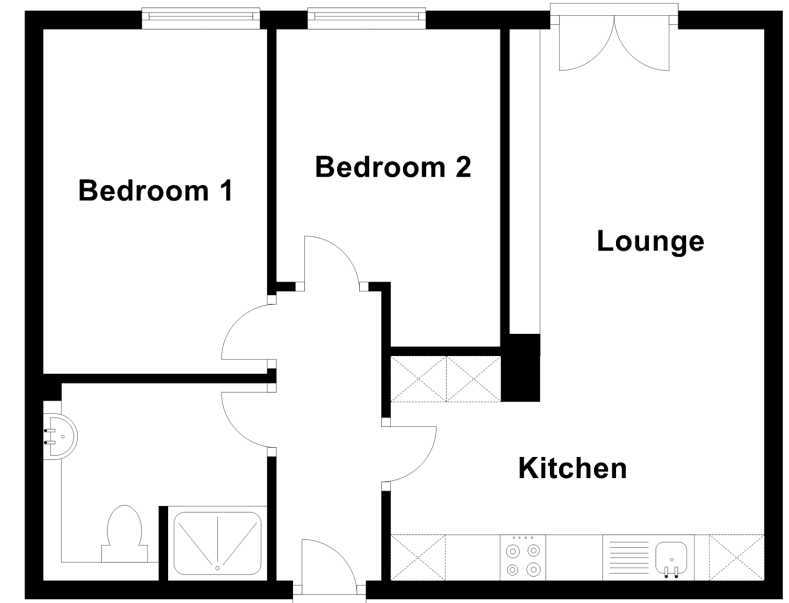
Shower Room

### OUTSIDE

Allocated Parking Space

### Third Floor

Approx. 47.3 sq. metres (509.4 sq. feet)



**Call Sutton - 020 8661 0330 ■ [cubittandwest.co.uk](http://cubittandwest.co.uk)**

- A private rental licensing scheme applies to some properties in this area, please contact us before proceeding
- Legal advice should be taken to verify fixtures/fittings, planning, alterations and/or lease details
- Appliances & services are untested, dimensions are approximate and floor plans are not to scale
- Through a Homewise Home For Life Plan people aged 60+ can secure this property for up to 59% less, by purchasing a Lifetime Lease.



22016751/20240316/CR/KWK