



Guide Price
£500,000

Freehold

3x  1x  2x 

**Lind Road, Sutton,
Surrey, SM1**



Video Tour available

cubitt&west
Helping you move forwards



Main features

- Unique home with double storey rear extension
- Allocated parking space
- Family friendly downstairs cloakroom and utility room
- Open plan kitchen/diner, perfect for entertaining
- Well presented and in immaculate condition

Accommodation

GROUND FLOOR

Entrance Hall

Lounge: 11'8 x 9'6 (3.56m x 2.90m)

Dining Area: 12'9 x 11'8 (3.89m x 3.56m)

Kitchen : 17'7 x 9'6 (5.36m x 2.90m)

Utility Room: 6'2 x 5'4 (1.88m x 1.63m)

Cloakroom

FIRST FLOOR

Landing

Bedroom 1: 16'6 x 10'6 (5.03m x 3.20m)

Bedroom 2: 9'5 x 9'1 (2.87m x 2.77m)

Bedroom 3: 7'9 x 7'8 (2.36m x 2.34m)

Bathroom: 12'1 x 5'0 (3.69m x 1.53m)

OUTSIDE

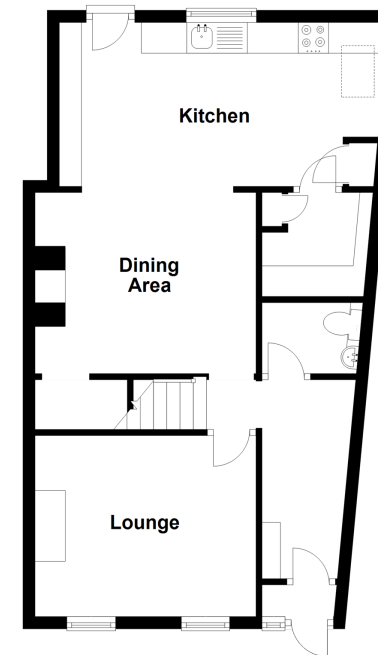
Front Garden

Rear Garden

Allocated Parking

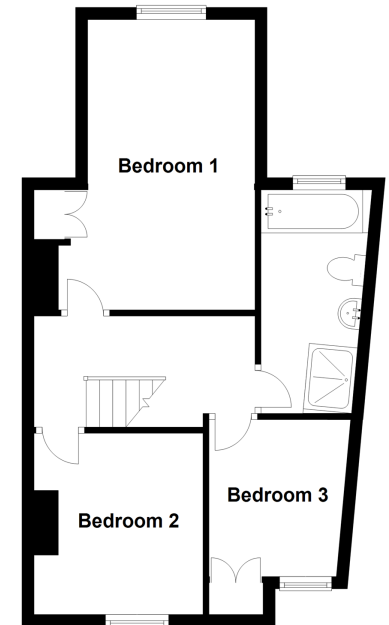
Ground Floor

Approx. 51.1 sq. metres (549.5 sq. feet)



First Floor

Approx. 43.3 sq. metres (465.7 sq. feet)



Call Sutton - 020 8661 0330 ■ cubittandwest.co.uk

- A private rental licensing scheme applies to some properties in this area, please contact us before proceeding
- Legal advice should be taken to verify fixtures/fittings, planning, alterations and/or lease details
- Appliances & services are untested, dimensions are approximate and floor plans are not to scale



22015213/20220222/CR/KV