



Guide Price
£775,000

Freehold

4x  2x  2x 

**Eames View,
Southwater, Horsham,
West Sussex, RH13**

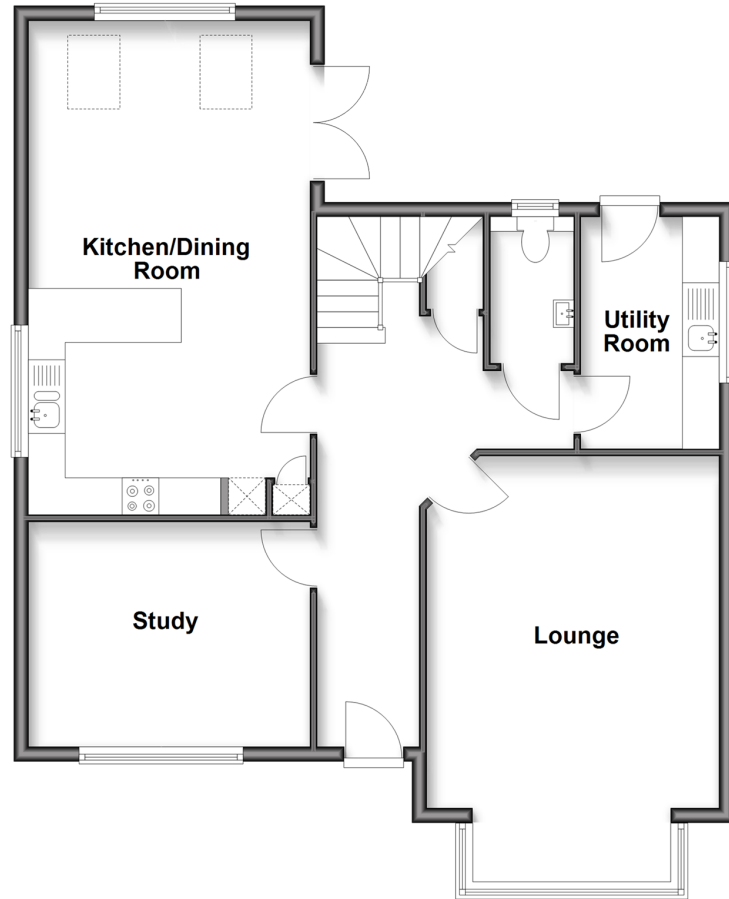
OVER 60?

Secure this property
for up to **59% less!**

cubitt&west
Helping you move forwards

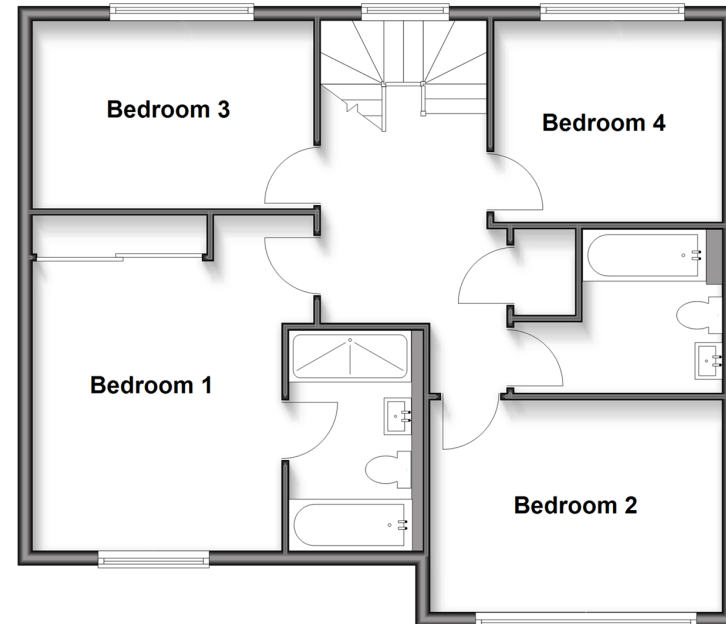
Ground Floor

Approx. 82.3 sq. metres (886.2 sq. feet)



First Floor

Approx. 71.2 sq. metres (766.0 sq. feet)



Accommodation

GROUND FLOOR

Hallway
Cloakroom
Utility Room
Kitchen/Dining Room: 19'5 x 12'11
(5.92m x 3.94m)
Lounge: 12'6 x 10'6 (3.81m x 3.20m)
Study: 12'6 x 10'0 (3.81m x 3.05m)

FIRST FLOOR

Landing
Bathroom
Bedroom 1: 13'6 maximum x 10'10
(4.12m x 3.30m)
En-suite
Bedroom 2: 12'10 x 9'7 (3.91m x 2.92m)
Bedroom 3: 12'8 x 9'9 (3.86m x 2.97m)
Bedroom 4: 10'6 x 8'10 (3.20m x 2.69m)

OUTSIDE

Front Garden
Garage
Driveway
Rear Garden



Main features

- Large detached house with garage great for families
- Presented in fantastic condition
- Useful en-suite to master bedroom
- 5 years remaining on NHBC warranty
- Walking distance to shops, schools, Southwater Country Park and The Downs Link



Nearest Schools

Primary Schools: Southwater Junior Academy 0.1 miles, Castlewood Primary 0.4 miles, Itchingfield Primary 1.8 miles
Secondary Schools: Christ's Hospital 1.1 miles, Muntham House School 2.0 miles, Tanbridge House School 2.5 miles



Transport Information

Train Stations: Christs Hospital 1.6 miles, Horsham 3.0 miles, Littlehaven 4.1 miles



Address

Eames View, Southwater, Horsham, West Sussex, RH13



Directions

For directions to this property please contact us.



cubitt&west
Helping you move forwards

Call Southwater Branch 01403 731901 ■ cubittandwest.co.uk



- Legal advice should be taken to verify fixtures/fittings, planning, alterations and/or lease details
- Appliances & services are untested, dimensions are approximate and floor plans are not to scale
- Through a Homewise Home For Life Plan people aged 60+ can secure this property for up to 50% less, by purchasing a Lifetime Lease.



21909562/20251107/CR/DA