



Guide Price
£550,000

Freehold

3x  2x  1x 

**Little Bridges Close,
Southwater, Horsham,
West Sussex, RH13**

OVER 60?

Secure this property
for up to **59% less!**

cubitt & west
Helping you move forwards



Main features

- Detached bungalow offered with no onward chain
- En-suite wet room to bedroom 1
- Patio doors opening onto garden from lounge and bedroom
- Garage and driveway for up to 5 cars
- Walking distance to local shops, transport links and Southwater Country Park

Outbuilding
Approx. 11.9 sq. metres (127.6 sq. feet)



Accommodation

GROUND FLOOR

Hallway

Kitchen: 20'3 x 9'9 (6.18m x 2.97m)

Lounge/Dining Area: (L-shaped) 23'2 x 10'8 (7.07m x 3.25m) plus 10'1 x 13'0 (3.08m x 3.97m)

Bathroom

Bedroom 1: 17'7 x 10'0 (5.36m x 3.05m)

En-suite Wet Room

Bedroom 2: 9'7 x 7'11 (2.92m x 2.41m)

Bedroom 3: 9'6 x 6'8 (2.90m x 2.03m)

OUTSIDE

Front Garden

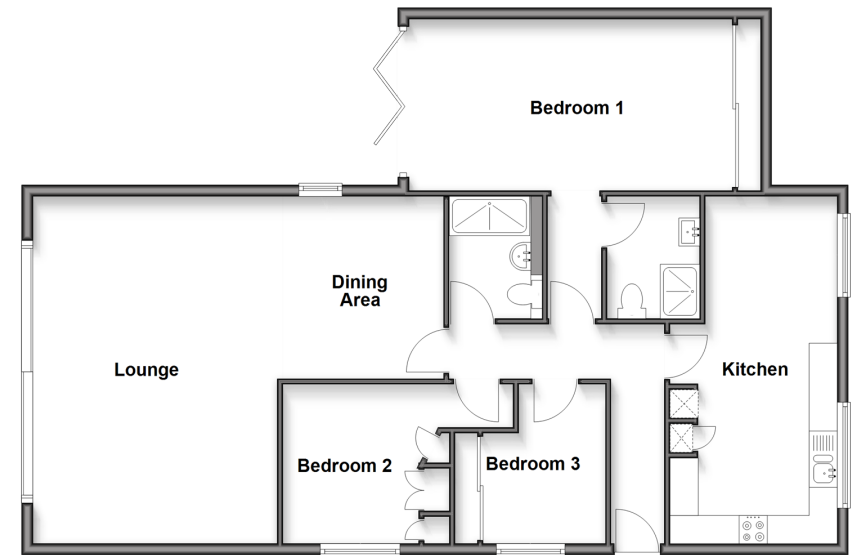
Driveway

Garage

Rear Garden

Outbuilding

Ground Floor
Approx. 107.8 sq. metres (1160.5 sq. feet)



Call Southwater - 01403 731901 ■ cubittandwest.co.uk

- Legal advice should be taken to verify fixtures/fittings, planning, alterations and/or lease details
- Appliances & services are untested, dimensions are approximate and floor plans are not to scale
- Through a Homewise Home For Life Plan people aged 60+ can secure this property for up to 50% less, by purchasing a Lifetime Lease.



21909318/20251024/DA/DA