



Price
£440,000

Freehold

3x  1x  1x 

**York Close, Horsham,
West Sussex, RH13**

OVER 60?

Secure this property
for up to **59% less!**

cubitt&west
Helping you move forwards



Main features

- Detached home located in quiet location with no ongoing chain
- Handy ground floor cloakroom
- Lovely rear garden mainly laid to lawn
- Property requires modernisation throughout although clean and tidy
- Driveway and garage with lighting and power

Accommodation

GROUND FLOOR

Entrance Hall

Cloakroom

Living/Dining Room: 24'3 x 8'8 (7.40m x 2.64m)

Kitchen: 12'1 x 7'8 (3.69m x 2.34m)

FIRST FLOOR

Landing

Bathroom

Bedroom 1: 11'3 x 9'7 (3.43m x 2.92m)

Bedroom 2: 10'6 x 8'9 (3.20m x 2.67m)

Bedroom 3: 7'9 x 6'6 (2.36m x 1.98m)

OUTSIDE

Front Garden

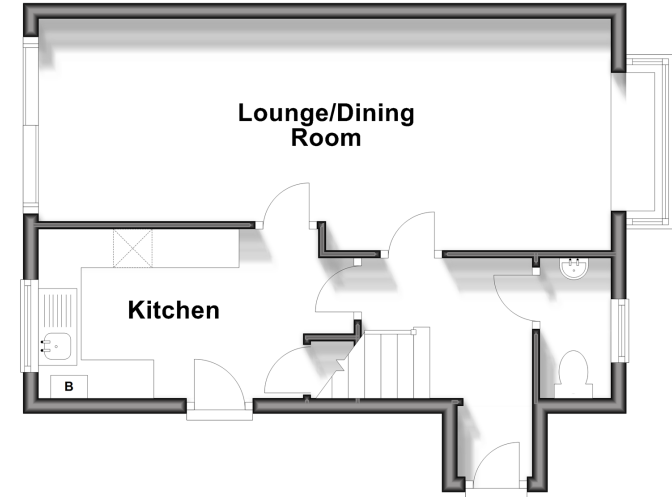
Rear Garden

Garage

Driveway

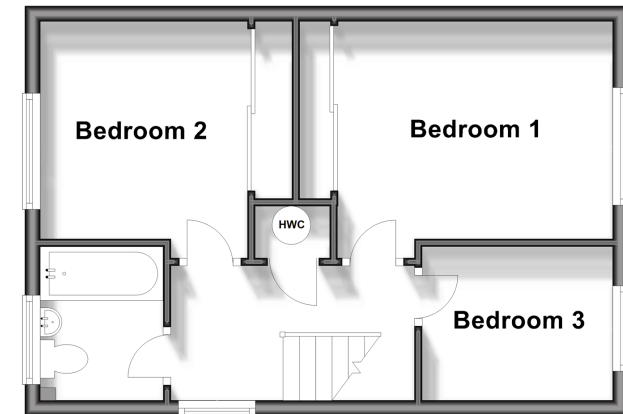
Ground Floor

Approx. 38.3 sq. metres (411.9 sq. feet)



First Floor

Approx. 36.8 sq. metres (395.7 sq. feet)



Call Southwater - 01403 731901 ■ cubittandwest.co.uk

- Legal advice should be taken to verify fixtures/fittings, planning, alterations and/or lease details
- Appliances & services are untested, dimensions are approximate and floor plans are not to scale
- Through a Homewise Home For Life Plan people aged 60+ can secure this property for up to 59% less, by purchasing a Lifetime Lease.



21909521/20250408/LFOG/LFOG