



Price
£445,000

Freehold

3x  1x  1x 

**The Glen, Southwater,
Horsham, West Sussex,
RH13**

OVER 60?

Secure this property
for up to **59% less!**

cubitt & west
Helping you move forwards



Main features

- Garage and driveway for multiple cars
- Sunny garden with decking
- Rear Access
- Fantastic location within walking distance to shops and transport links
- Presented in great condition

Accommodation

GROUND FLOOR

Entrance Hall
 Cloakroom
 Lounge : 15'9 x 12'10 (4.80m x 3.91m)
 Dining Room: 10'6 x 7'8 (3.20m x 2.34m)
 Kitchen: 9'6 x 7'6 (2.90m x 2.29m)
 Conservatory : 13'8 x 7'8 (4.17m x 2.34m)

FIRST FLOOR

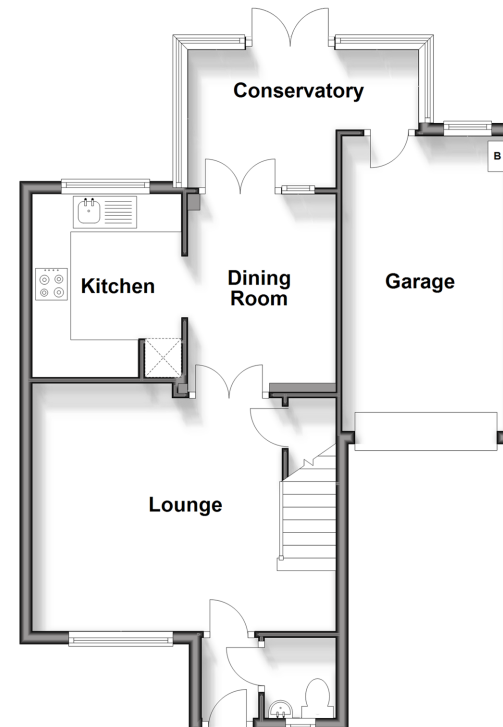
Landing
 Bedroom 1: 10'5 x 9'2 (3.18m x 2.80m)
 Bedroom 2: 9'6 x 8'5 (2.90m x 2.57m)
 Bedroom 3: 11'0 x 6'11 (3.36m x 2.11m)
 Bathroom : 6'2 x 6'1 (1.88m x 1.86m)

OUTSIDE

Off Road Parking
 Garage
 Rear Garden

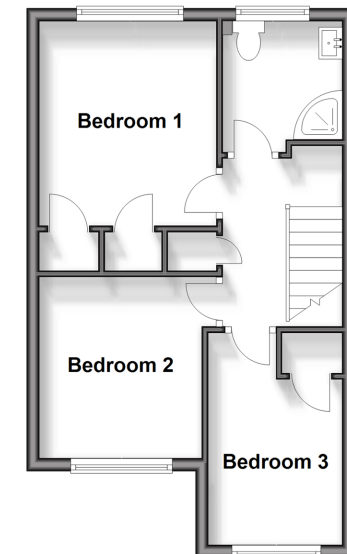
Ground Floor

Approx. 55.3 sq. metres (594.8 sq. feet)



First Floor

Approx. 35.7 sq. metres (384.3 sq. feet)



Call Southwater - 01403 731901 ■ cubittandwest.co.uk

■ Legal advice should be taken to verify fixtures/fittings, planning, alterations and/or lease details
 ■ Through a Homewise Home For Life Plan people aged 60+ can secure this property for up to 59% less, by purchasing a Lifetime Lease.

■ Appliances & services are untested, dimensions are approximate and floor plans are not to scale



21909227/20240726/LA/DW