



Price
£535,000

Freehold

3x  3x  1x 

**Chessall Avenue,
Southwater, Horsham,
West Sussex, RH13**

OVER 60?

Secure this property
for up to **59% less!**

cubitt & west
Helping you move forwards



Main features

- **Fantastic family home set over three floors**
- **Within walking distance to shops and schools**
- **Generous storage throughout with under stairs cupboard housing the washing machine**
- **Two parking spaces to the front of the property**
- **Large master bedroom with skylights and additional en-suite**

Accommodation

GROUND FLOOR

Entrance Hall
Cloakroom
Lounge : 21'2 x 16'6 (6.46m x 5.03m)
Kitchen : 19'2 x 9'3 (5.85m x 2.82m)

FIRST FLOOR

Landing
Bedroom 2: 15'2 x 9'11 (4.63m x 3.02m)
En-suite Bathroom : 10'6 x 5'6 (3.20m x 1.68m)
Bedroom 3: 12'3 x 9'1 (3.74m x 2.77m)
Family Bathroom : 7'1 x 5'6 (2.16m x 1.68m)

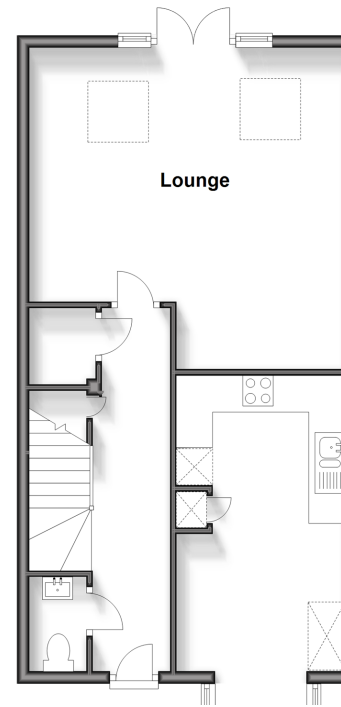
SECOND FLOOR

Bedroom 1: 20'1 x 16'6 (6.13m x 5.03m)
En-suite Shower Room : 9'0 x 5'9 (2.75m x 1.75m)

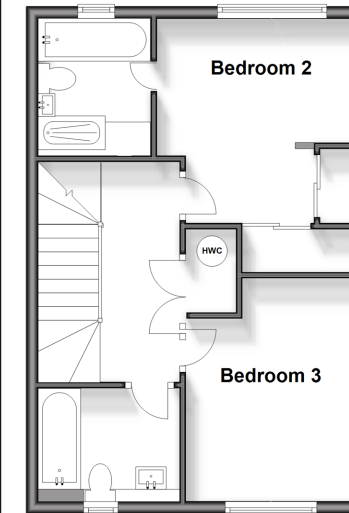
OUTSIDE

Off Road Parking
Rear Garden

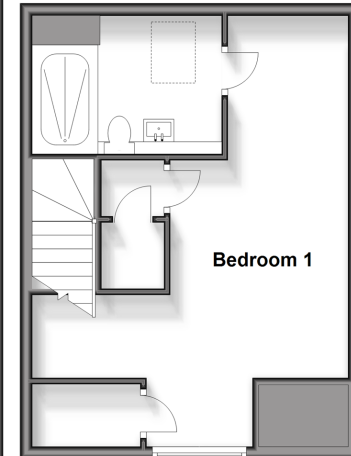
Ground Floor
Approx. 54.0 sq. metres (581.2 sq. feet)



First Floor
Approx. 41.2 sq. metres (443.5 sq. feet)



Second Floor
Approx. 36.8 sq. metres (396.6 sq. feet)



Call Southwater - 01403 731901 ■ cubittandwest.co.uk

- Legal advice should be taken to verify fixtures/fittings, planning, alterations and/or lease details
- Through a Homewise Home For Life Plan people aged 60+ can secure this property for up to 59% less, by purchasing a Lifetime Lease.

- Appliances & services are untested, dimensions are approximate and floor plans are not to scale



21909445/20240924/LA/DW