



Price
£590,000

Freehold

3x  1x  1x 

**Little Bridges Close,
Southwater, Horsham,
West Sussex, RH13**

OVER 60?

Secure this property
for up to **59% less!**

cubitt & west
Helping you move forwards



Main features

- Sold with no forward chain
- Extensive and private corner plot
- Quiet cul-de-sac location
- Scope for personalisation and extension (STPP)
- Short distance to Southwater shops and amenities with excellent transport links to Horsham

Accommodation

GROUND FLOOR

- Porch : 10'7 x 4'1 (3.23m x 1.25m)
- Hallway
- Lounge : 20'9 x 13'7 (6.33m x 4.14m)
- Boot Area: 6'9 x 6'6 (2.06m x 1.98m)
- Cloakroom
- Kitchen / Dining Area : 19'2 x 10'2 (5.85m x 3.10m)
- Utility : 7'3 x 2'11 (2.21m x 0.89m)
- Bathroom
- Bedroom 1: 13'10 x 9'11 (4.22m x 3.02m)
- Bedroom 2: 11'6 x 9'5 (3.51m x 2.87m)
- Bedroom 3: 10'0 x 6'5 (3.05m x 1.96m)
- Out buildings
- Garage
- Workshop

OUTSIDE

- Front and Rear Garden

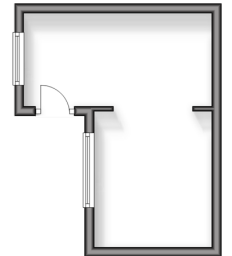
Ground Floor
Approx. 103.8 sq. metres (1117.8 sq. feet)



Outbuilding 1
Approx. 23.1 sq. metres (248.2 sq. feet)



Outbuilding 2
Approx. 14.9 sq. metres (160.5 sq. feet)



Call Southwater - 01403 731901 ■ cubittandwest.co.uk

- Legal advice should be taken to verify fixtures/fittings, planning, alterations and/or lease details
- Through a Homewise Home For Life Plan people aged 60+ can secure this property for up to 59% less, by purchasing a Lifetime Lease.

- Appliances & services are untested, dimensions are approximate and floor plans are not to scale



21909231/20240710/LA/OS