



Price
£650,000

Freehold

4x  4x  2x 

**Eversfield, Southwater,
Horsham, West Sussex,
RH13**

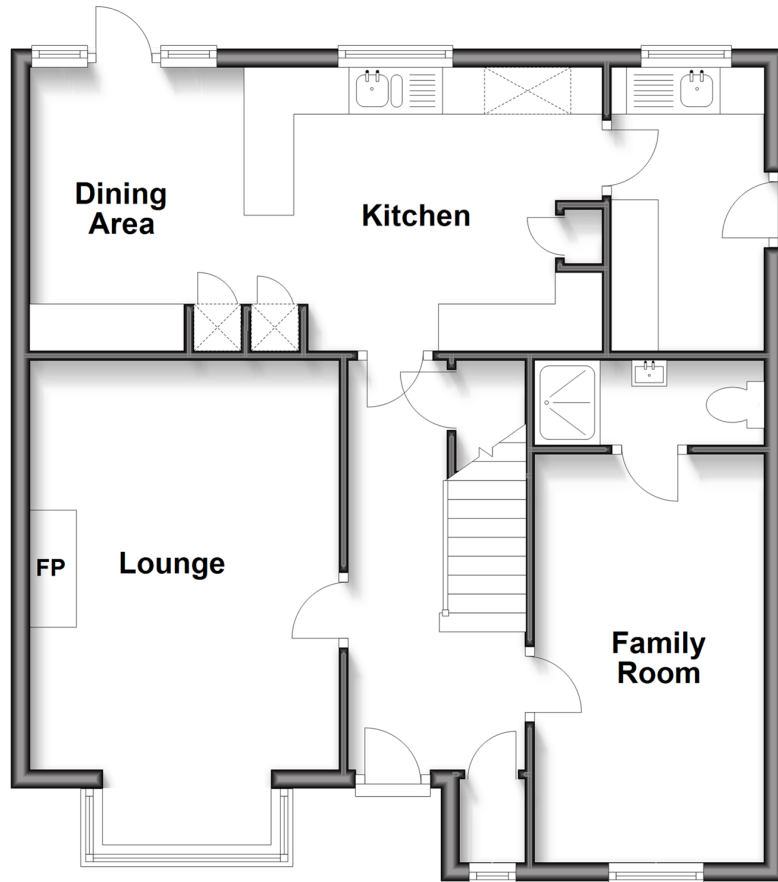
OVER 60?

Secure this property
for up to **59% less!**

cubitt&west
Helping you move forwards

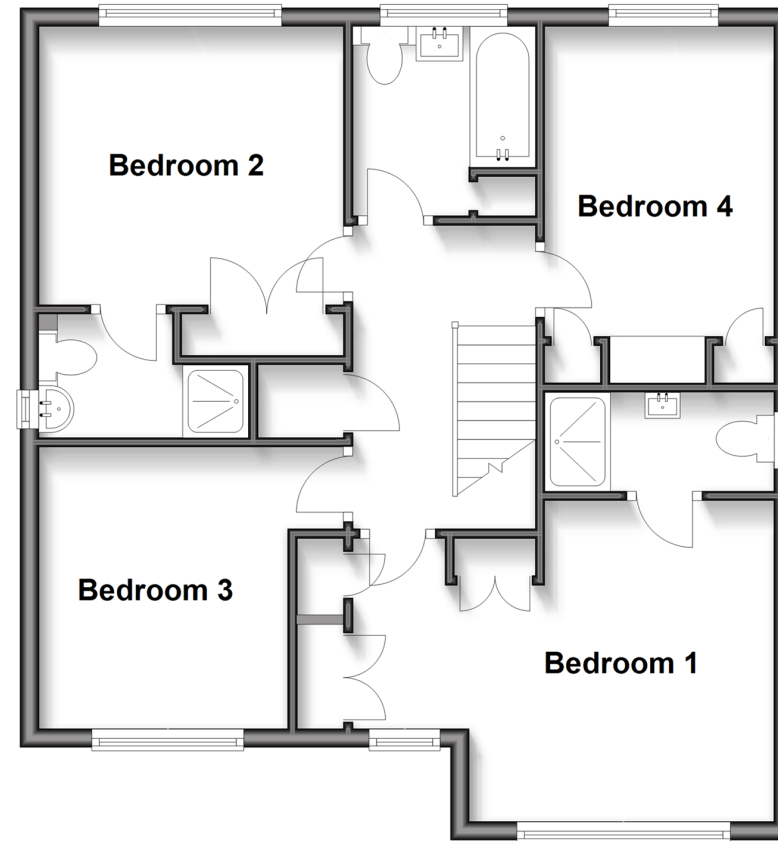
Ground Floor

Approx. 62.1 sq. metres (668.3 sq. feet)



First Floor

Approx. 62.9 sq. metres (677.1 sq. feet)



Accommodation

GROUND FLOOR

Entrance Hall

Lounge : 16'9 x 10'8 (5.11m x 3.25m)

Kitchen : 10'1 x 9'2 (3.08m x 2.80m)

Dining Area : 10'1 x 9'7 (3.08m x 2.92m)

Utility Room : 10'1 x 5'5 (3.08m x 1.65m)

Family Room: 13'3 x 7'2 (4.04m x 2.19m)

En-suite : 7'2 x 3'1 (2.19m x 0.94m)

FIRST FLOOR

Landing

Bedroom 1: 14'6 x 11'5 (4.42m x 3.48m)

En-suite Shower Room : 7'5 x 4'7 (2.26m x 1.40m)

Bedroom 2: 10'6 x 10'0 (3.20m x 3.05m)

En-suite Shower Room : 7'2 x 2'9 (2.19m x 0.84m)

Bedroom 3: 9'9 x 8'9 (2.97m x 2.67m)

Bedroom 4: 12'8 x 8'2 (3.86m x 2.49m)

Family Bathroom : 7'1 x 5'9 (2.16m x 1.75m)

OUTSIDE

Off Road Parking

Rear Garden



Main features

- Beautifully extended family home in highly desired road
- Two en-suite shower rooms and family bathroom
- Additional ground floor shower room off of the family room
- Lovely open plan kitchen/dining area overlooking the rear garden. With planning to still extend the ground floor
- Located close to Southwater Country Park



Nearest Schools

Primary Schools: Castlewood Primary 0.6 miles, Southwater Junior Academy 0.9 miles, Shipley CofE Primary 2.9 miles

Secondary Schools: Muntham House School 4.1 miles,



Transport Information

Train Stations: Horsham 4.2 miles, Christs Hospital 4.4 miles, Billingshurst 4.8 miles



Address

Eversfield, Southwater, Horsham, West Sussex, RH13



Directions

For directions to this property please contact us.



cubitt&west
Helping you move forwards

Call Southwater Branch 01403 731901 ■ cubittandwest.co.uk



- Legal advice should be taken to verify fixtures/fittings, planning, alterations and/or lease details
- Appliances & services are untested, dimensions are approximate and floor plans are not to scale
- Through a Homewise Home For Life Plan people aged 60+ can secure this property for up to 59% less, by purchasing a Lifetime Lease.



21909388/20250127/CR/OS