



Price
£450,000

Freehold

3x  2x  1x 

**Centenary Road,
Southwater, Horsham,
West Sussex, RH13**

OVER 60?

Secure this property
for up to **59% less!**

cubitt & west
Helping you move forwards



Main features

- Remainder of NHBC built in 2020
- Situated on the Mulberry fields development by Miller Homes
- External power to shed
- Close to Southwater village centre, Gatwick airport and Horsham with links to London
- Immaculate home, ideal for families, first time buyers or investors

Accommodation

GROUND FLOOR

Entrance Hall
 Kitchen : 10'6 x 9'6 (3.20m x 2.90m)
 Lounge / Dining Room : 15'9 x 14'8 (4.80m x 4.47m)
 Cloakroom

FIRST FLOOR

Landing
 Bedroom 1: 10'4 x 10'2 (3.15m x 3.10m)
 En-suite Shower Room
 Bedroom 2: 9'7 x 9'4 (2.92m x 2.85m)
 Bedroom 3: 9'5 x 6'0 (2.87m x 1.83m)
 Family Bathroom : 7'4 x 5'6 (2.24m x 1.68m)

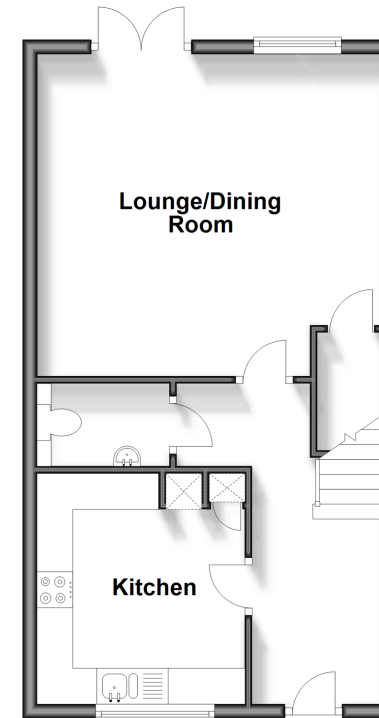
OUTSIDE

Front and Rear Garden
 Off Road Parking

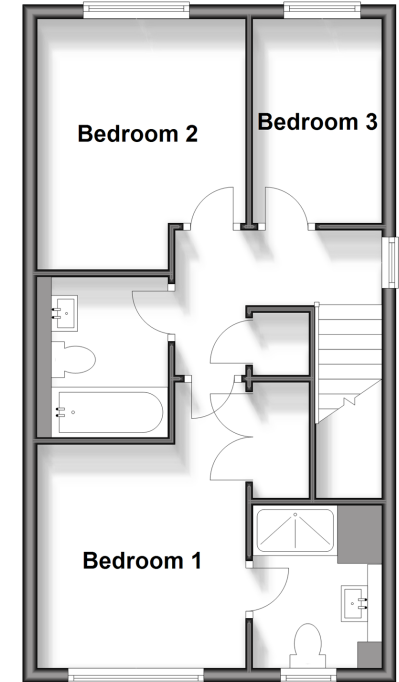
Call Southwater - 01403 731901 ■ cubittandwest.co.uk

- Legal advice should be taken to verify fixtures/fittings, planning, alterations and/or lease details
- Appliances & services are untested, dimensions are approximate and floor plans are not to scale
- Through a Homewise Home For Life Plan people aged 60+ can secure this property for up to 59% less, by purchasing a Lifetime Lease.

Ground Floor
 Approx. 43.7 sq. metres (470.6 sq. feet)



First Floor
 Approx. 43.7 sq. metres (470.6 sq. feet)



EPC RATING	CURRENT:	POTENTIAL:
	B(85)	A(96)



21909418/20240528/LA/OS