



OVER 60?

Secure this property
for up to **59% less!**

Price

£380,000

Freehold

2x  2x  1x 

**Heasman Place,
Southwater, Horsham,
West Sussex, RH13**

cubitt & west
Helping you move forwards



Main features

- Beautifully presented throughout
- Sold with the remainder of NHBC warranty
- Driveway with access to the garden
- Hawthorne style build by Miller Homes
- French doors leading out to the garden and en-suite

Accommodation

GROUND FLOOR

Entrance Hall
 Cloakroom
 Lounge : 14'10 x 10'2 (4.52m x 3.10m)
 Dining Room : 11'5 x 6'6 (3.48m x 1.98m)
 Kitchen : 10'6 x 7'7 (3.20m x 2.31m)

FIRST FLOOR

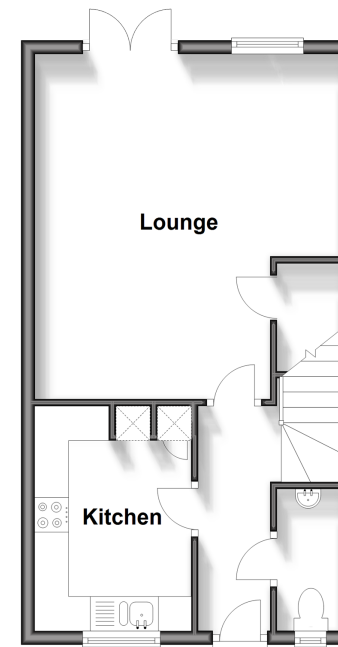
Landing
 Bedroom 1: 10'5 x 8'1 (3.18m x 2.47m)
 En-suite Shower Room
 Bedroom 2: 14'10 x 10'10 (4.52m x 3.30m)
 Bathroom

OUTSIDE

Front Garden
 Off Road Parking
 Rear Garden

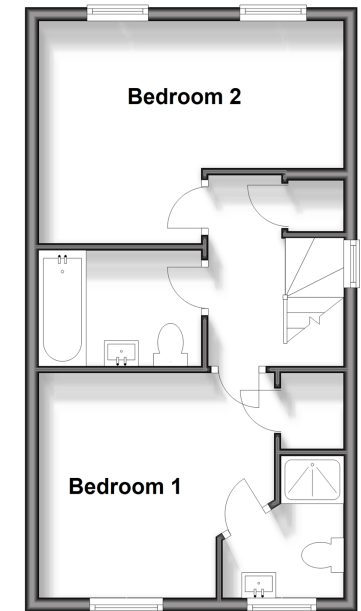
Ground Floor

Approx. 37.5 sq. metres (403.9 sq. feet)



First Floor

Approx. 37.5 sq. metres (403.9 sq. feet)



Call Southwater - 01403 731901 ■ cubittandwest.co.uk

■ Legal advice should be taken to verify fixtures/fittings, planning, alterations and/or lease details
 ■ Through a Homewise Home For Life Plan people aged 60+ can secure this property for up to 59% less, by purchasing a Lifetime Lease.

■ Appliances & services are untested, dimensions are approximate and floor plans are not to scale



21909320/20240315/OS/OS