



**Price**  
**£265,000**

**Freehold**

1x  1x  1x 

**Jay Close, Southwater,  
Horsham, West Sussex,  
RH13**



**Video Tour available**

**cubitt & west**  
Helping you move forwards



## Main features

- Charming one bedroom freehold house
- Sought after residential area in a quiet cul-de-sac
- Private street entrance
- Close to local shops, walks and other Southwater amenities
- Off road parking and large garage

## Accommodation

### GROUND FLOOR

#### FIRST FLOOR

**Lounge / Dining Area:** 21'0 x 15'0  
(6.41m x 4.58m)

**Kitchen :** 7'11 x 7'0 (2.41m x 2.14m)

**Bedroom 1:** 13'0 x 9'0 (3.97m x 2.75m)

**Bathroom :** 6'1 x 5'1 (1.86m x 1.55m)

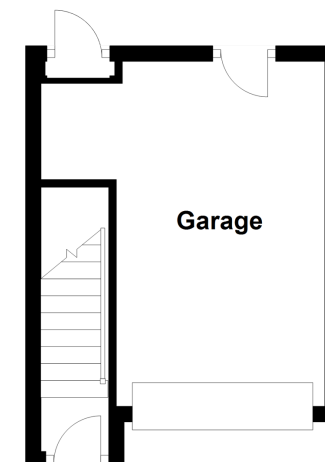
### OUTSIDE

**Garage**

**Off Road Parking**

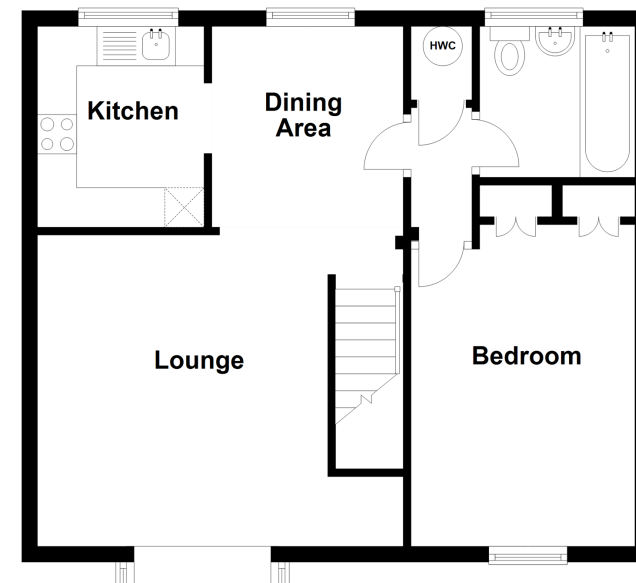
### Ground Floor

Approx. 16.3 sq. metres (175.9 sq. feet)



### First Floor

Approx. 51.1 sq. metres (549.6 sq. feet)



**Call Southwater - 01403 731901 ■ [cubittandwest.co.uk](http://cubittandwest.co.uk)**

- Legal advice should be taken to verify fixtures/fittings, planning, alterations and/or lease details
- Appliances & services are untested, dimensions are approximate and floor plans are not to scale



21908960/20210504/LA/LFOG