



Guide Price
£500,000

Freehold

3x  1x  2x 

**Fairford Avenue,
Croydon, Surrey, CR0**

OVER 60?

Secure this property
for up to **59% less!**

cubitt & west
Helping you move forwards



Main features

- Chain Free
- Moments away from outstanding schools
- Ready to put your own stamp on
- Ample storage throughout
- Sort after location
- Driveway for two cars for added convenience

Accommodation

GROUND FLOOR

Hallway
 Lounge: 13'3 x 11'2 (4.04m x 3.41m)
 Dining Room: 12'0 x 10'0 (3.66m x 3.05m)
 Sun Area: 10'0 x 9'10 (3.05m x 3.00m)
 Kitchen: 9'2 x 6'9 (2.80m x 2.06m)

FIRST FLOOR

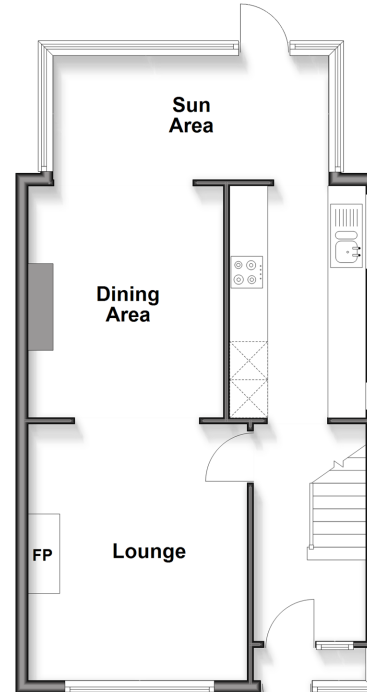
Landing
 Bedroom 1: 13'0 x 9'0 (3.97m x 2.75m)
 Bedroom 2: 12'9 x 9'6 (3.89m x 2.90m)
 Bedroom 3: 7'7 x 6'4 (2.31m x 1.93m)
 Family Bathroom

OUTSIDE

Front Garden
 Rear Garden

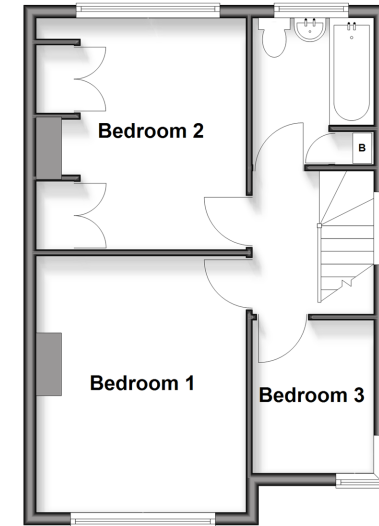
Ground Floor

Approx. 50.5 sq. metres (543.7 sq. feet)



First Floor

Approx. 40.3 sq. metres (434.0 sq. feet)



Call Shirley - 020 8654 3037 ■ cubittandwest.co.uk

■ Legal advice should be taken to verify fixtures/fittings, planning, alterations and/or lease details
 ■ Through a Homewise Home For Life Plan people aged 60+ can secure this property for up to 59% less, by purchasing a Lifetime Lease

■ Appliances & services are untested, dimensions are approximate and floor plans are not to scale



21712087/20260111/SR/MS