



**OVER 60?**

Secure this property  
for up to **59% less!**

**Price**

**£325,000**

**Freehold**

3x  1x  2x 

**North Walk, New  
Addington, Croydon,  
Surrey, CR0**

**cubitt&west**  
Helping you move forwards





## Main features

- Mid Terrace House
- No onward chain
- Downstairs Cloakroom
- Requires Modernisation
- Close to local amenities and great transport links

## Accommodation

### GROUND FLOOR

Hall  
Cloak Room  
Living Room: 12'4 x 11'8 (3.76m x 3.56m)  
Dining Room : 12'6 x 7'11 (3.81m x 2.41m)  
Kitchen: 10'5 x 10'4 (3.18m x 3.15m)

### FIRST FLOOR

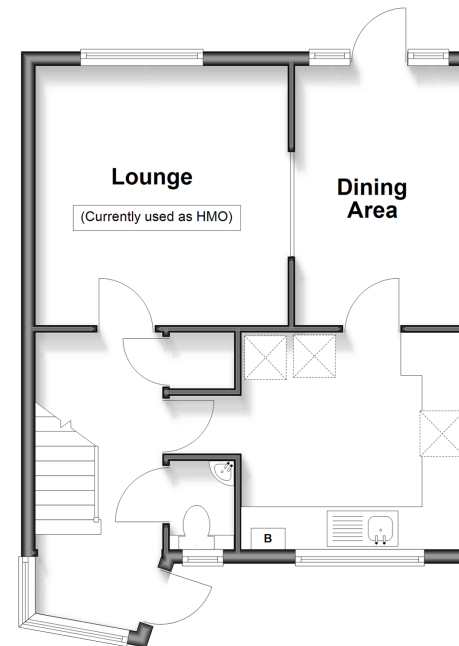
Landing  
Bedroom 1: 12'8 x 11'9 (3.86m x 3.58m)  
Bedroom 2: 10'3 x 6'11 (3.13m x 2.11m)  
Bedroom 3: 9'8 x 7'0 (2.95m x 2.14m)  
Bathroom

### OUTSIDE

Front Garden  
Rear Garden

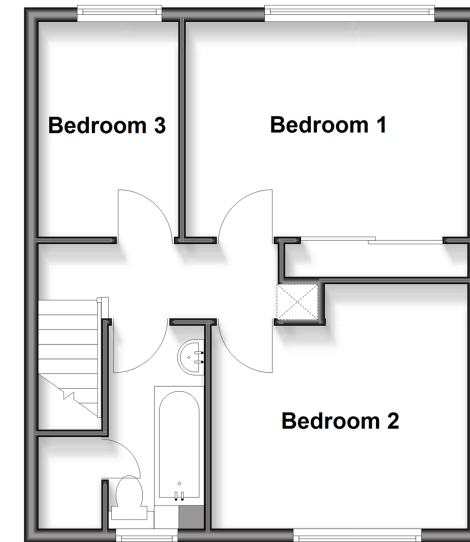
### Ground Floor

Approx. 42.8 sq. metres (460.9 sq. feet)



### First Floor

Approx. 43.2 sq. metres (464.7 sq. feet)



**Call Shirley - 020 8654 3037 ■ [cubittandwest.co.uk](http://cubittandwest.co.uk)**

- Legal advice should be taken to verify fixtures/fittings, planning, alterations and/or lease details
- Appliances & services are untested, dimensions are approximate and floor plans are not to scale
- Through a Homewise Home For Life Plan people aged 60+ can secure this property for up to 50% less, by purchasing a Lifetime Lease.



21711986/20250910/CR/PH