



Guide Price
£250,000

Leasehold

3x  1x  1x 

**High Street, Croydon,
Surrey, CR0**

OVER 60?

Secure this property
for up to **59% less!**

cubitt & west
Helping you move forwards



Main features

- Chain free - move in with ease
- Bright and airy throughout
- Large lounge and modern kitchen
- Convenient location, close to local amenities
- Excellent transport links nearby

Accommodation

SECOND FLOOR

Hallway

Kitchen: 9'9 x 5'9 (2.97m x 1.75m)

Living Area: 18'1 x 14'1 (5.52m x 4.30m)

Bedroom 1: 15'1 x 11'11 (4.60m x 3.63m)

Bedroom 2: 15'10 x 7'11 (4.83m x 2.41m)

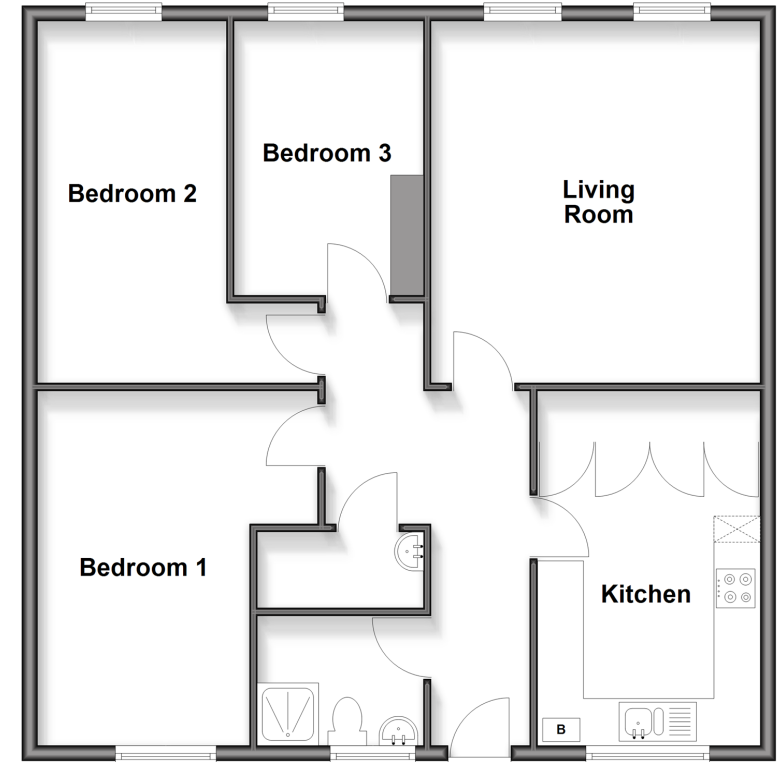
Bedroom 3: 12'5 x 7'11 (3.79m x 2.41m)

WC/Shower Room: 6'10 x 5'10 (2.08m x 1.78m)

Utility Room : 6'10 x 2'7 (2.08m x 0.79m)

Second Floor

Approx. 86.9 sq. metres (935.2 sq. feet)



Call Shirley - 020 8654 3037 ■ cubittandwest.co.uk

- Legal advice should be taken to verify fixtures/fittings, planning, alterations and/or lease details
- Appliances & services are untested, dimensions are approximate and floor plans are not to scale
- Through a Homewise Home For Life Plan people aged 60+ can secure this property for up to 59% less, by purchasing a Lifetime Lease.



21711884/20250531/CB/PH