



**Guide Price**  
**£230,000**

**Leasehold**

2x  1x  1x 

**Adams Way, Croydon,  
Surrey, CR0**

**OVER 60?**

Secure this property  
for up to **59% less!**

**cubitt&west**  
Helping you move forwards





## Main features

- Excellent ground floor flat
- Allocated parking
- Communal grounds
- Perfect for first time buyers and investors
- Ideal for commuters
- Situated close to transport and local amenities

## Accommodation

### GROUND FLOOR

#### Hallway

Lounge: 18'0 x 10'0 (5.49m x 3.05m)

Kitchen: 8'0 x 7'0 (2.44m x 2.14m)

Bedroom 1: 10'11 x 5'9 (3.33m x 1.75m)

Bedroom 2: 17'7 x 8'4 (5.36m x 2.54m)

Bathroom : 7'9 x 6'8 (2.36m x 2.03m)

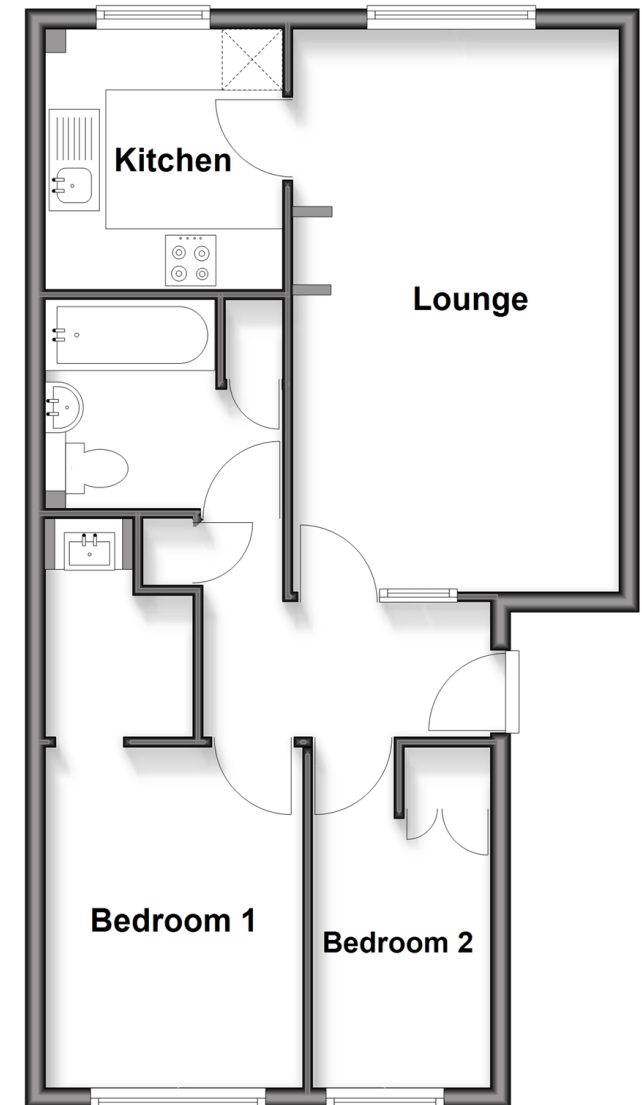
### OUTSIDE

Allocated Parking

Communal Garden

## Ground Floor

Approx. 53.2 sq. metres (572.2 sq. feet)



**Call Shirley - 020 8654 3037 ■ [cubittandwest.co.uk](http://cubittandwest.co.uk)**

- Legal advice should be taken to verify fixtures/fittings, planning, alterations and/or lease details
- Appliances & services are untested, dimensions are approximate and floor plans are not to scale
- Through a Homewise Home For Life Plan people aged 60+ can secure this property for up to 59% less, by purchasing a Lifetime Lease.



21711877/20250609/CR3/MS