



Guide Price
£285,000

Leasehold

2x  1x  1x 

**Le Chateau, Chatsworth
Road, Croydon, Surrey,
CR0**

OVER 60?

Secure this property
for up to **59% less!**



cubitt & west
Helping you move forwards



Main features

- Ground floor flat with 2 double sized bedrooms
- Separate refitted kitchen
- No onward chain
- Garage en-bloc
- Close to local amenities as well as excellent transport links being near to East and South Croydon stations

Accommodation

GROUND FLOOR

Hallway

Lounge: 14'6 x 11'4 (4.42m x 3.46m)

Kitchen: 16'7 x 8'5 (5.06m x 2.57m)

Bedroom 1: 16'8 x 15'7 (5.08m x 4.75m)

Bedroom 2: 19'8 x 12'11 (6.00m x 3.94m)

Bathroom: 9'7 x 9'1 (2.92m x 2.77m)

Separate Toilet

OUTSIDE

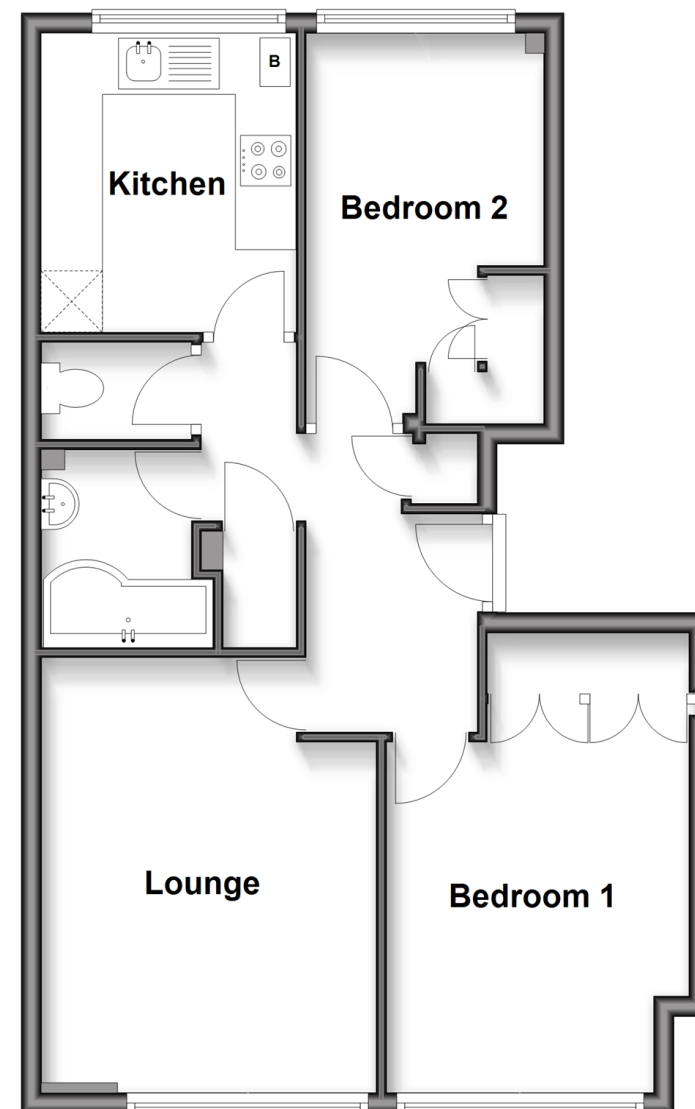
Communal Gardens

Garage

Storage Shed

Ground Floor

Approx. 57.1 sq. metres (614.2 sq. feet)



Call Shirley - 020 8654 3037 ■ cubittandwest.co.uk

- Legal advice should be taken to verify fixtures/fittings, planning, alterations and/or lease details
- Appliances & services are untested, dimensions are approximate and floor plans are not to scale
- Through a Homewise Home For Life Plan people aged 60+ can secure this property for up to 59% less, by purchasing a Lifetime Lease.