



OVER 60?

Secure this property
for up to **59% less!**

Guide Price

£400,000

Freehold

3x  1x  2x 

Betony Close, Shirley
Oaks Village, Croydon,
Surrey, CR0

cubitt&west
Helping you move forwards



Main features

- Mid-terrace house located in a quiet cul-de-sac
- Spacious open-plan lounge/dining area
- All bedrooms are a good size
- Low-maintenance garden
- Allocated parking and garage en-bloc

Accommodation

GROUND FLOOR

Entrance Porch
Cloakroom
Lounge: 13'3 x 11'8 (4.04m x 3.56m)
Dining Area: 12'3 x 7'3 (3.74m x 2.21m)
Kitchen: 10'4 x 7'3 (3.15m x 2.21m)

FIRST FLOOR

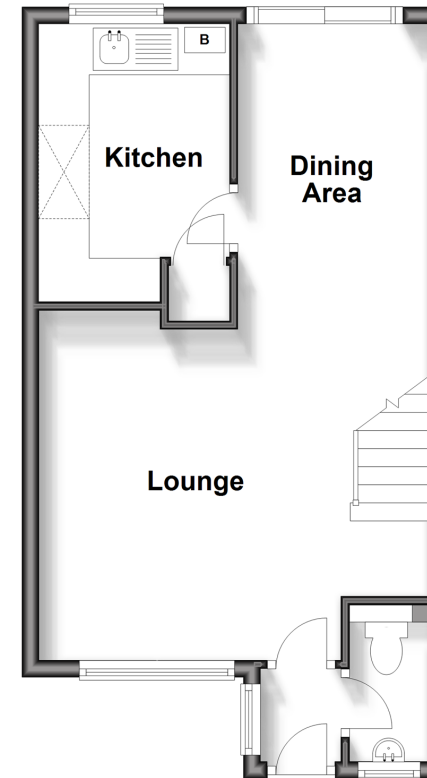
Landing
Bedroom 1: 11'3 x 8'8 (3.43m x 2.64m)
Bedroom 2: 10'11 x 7'3 (3.33m x 2.21m)
Bedroom 3: 7'4 x 7'2 (2.24m x 2.19m)
Bathroom

OUTSIDE

Garage En-Bloc
Off Street Parking
Rear Garden

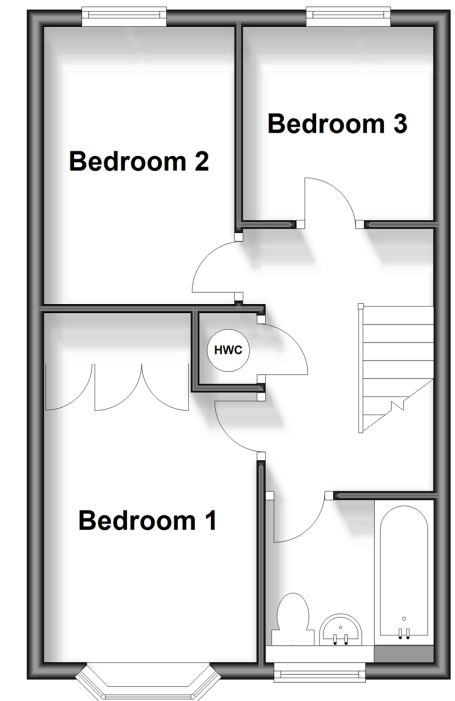
Ground Floor

Approx. 36.9 sq. metres (396.7 sq. feet)



First Floor

Approx. 34.6 sq. metres (372.6 sq. feet)



Call Shirley - 020 8654 3037 ■ cubittandwest.co.uk

- If buying to let, the energy rating will need to be improved to at least 'E' rating before you can let the property
- Legal advice should be taken to verify fixtures/fittings, planning, alterations and/or lease details
- Appliances & services are untested, dimensions are approximate and floor plans are not to scale
- Through a Homewise Home For Life Plan people aged 60+ can secure this property for up to 59% less, by purchasing a Lifetime Lease.



21711506/20250115/MS/CB