



Price
£200,000

Leasehold

2x 🛏️ 2x 🚿 1x 🚗

**Skyview Apartments,
Park Street, Croydon,
Surrey, CR0**

OVER 60?

Secure this property
for up to **59% less!**

cubitt & west
Helping you move forwards



Main features

- Two bedroom first floor apartment
- No chain, vacant possession
- Double aspect reception room
- Video entry phone system and a lift
- Located in the heart of Croydon within 0.3 miles to East Croydon station with shops and restaurants just a stone's throw away

Accommodation

FIRST FLOOR

Entrance Hall

Living Room : 17'7 x 15'5 (5.36m x 4.70m)

Kitchen: 9'10 x 6'6 (3.00m x 1.98m)

Bedroom 1: 12'4 x 9'5 (3.76m x 2.87m)

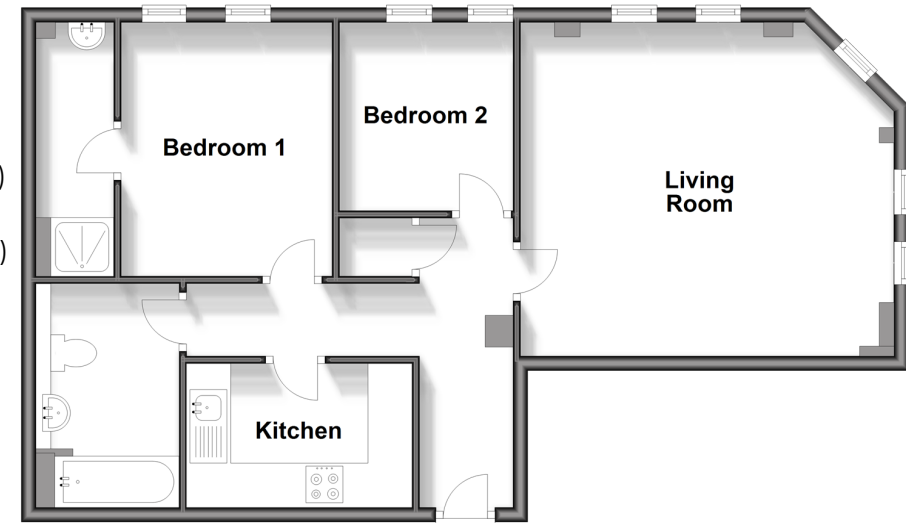
En-Suite Shower Room

Bedroom 2: 9'4 x 7'10 (2.85m x 2.39m)

Bathroom

First Floor

Approx. 65.3 sq. metres (703.4 sq. feet)



Call Shirley - 020 8654 3037 ■ cubittandwest.co.uk

- Legal advice should be taken to verify fixtures/fittings, planning, alterations and/or lease details
- Appliances & services are untested, dimensions are approximate and floor plans are not to scale
- Through a Homewise Home For Life Plan people aged 60+ can secure this property for up to 59% less, by purchasing a Lifetime Lease.



21711704/20241018/SR/CB