



Price
£450,000

Freehold

3x  1x  1x 

**Grange Park Road,
Thornton Heath, Surrey,
CR7**

OVER 60?

Secure this property
for up to **59% less!**

cubitt&west
Helping you move forwards



Main features

- Three bedroom Semi-Detached house in Thornton Heath
- Tastefully decorated throughout
- Generously sized bedrooms for that growing family
- Good sized front and rear gardens
- Situated close to Thornton Heath station, restaurants and shops

Accommodation

GROUND FLOOR

Entrance Hall

Lounge / Dining Room: 23'5 x 12'7
(7.14m x 3.84m)

Kitchen: 11'7 x 8'1 (3.53m x 2.47m)

FIRST FLOOR

Landing

Bedroom 1: 12'8 x 12'1 (3.86m x 3.69m)

Bedroom 2: 12'8 x 11'2 (3.86m x 3.41m)

Bedroom 3: 8'8 x 7'11 (2.64m x 2.41m)

Bathroom

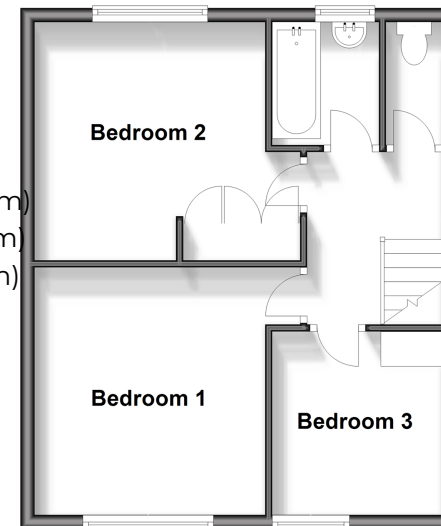
Separate Toilet

OUTSIDE

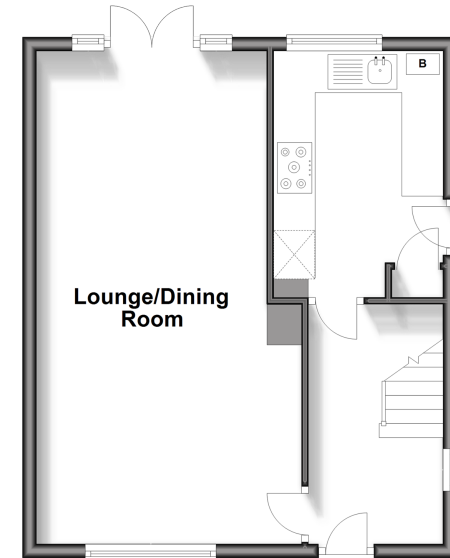
Front Garden

Rear Garden

First Floor
Approx. 41.4 sq. metres (445.5 sq. feet)



Ground Floor
Approx. 41.8 sq. metres (450.4 sq. feet)



Call Shirley - 020 8654 3037 ■ cubittandwest.co.uk

- Legal advice should be taken to verify fixtures/fittings, planning, alterations and/or lease details
- Appliances & services are untested, dimensions are approximate and floor plans are not to scale
- Through a Homewise Home For Life Plan people aged 60+ can secure this property for up to 50% less, by purchasing a Lifetime Lease.



21710519/20250917/MS/PH