



Guide Price
£185,000

Leasehold

1x  1x  1x 

**Franklin Way, Croydon,
Surrey, CR0**

cubitt&west
Helping you move forwards



Main features

- Ground floor purpose built flat with separate kitchen
- No chain
- Allocated parking and entry system into the flat
- Double bedroom with fitted wardrobes
- Good access to transport links into London

Accommodation

GROUND FLOOR

Entrance Hallway

Lounge/Dining Room : 17'0 x 12'2
(5.19m x 3.71m)

Kitchen: 8'5 x 6'4 (2.57m x 1.93m)

Bedroom : 10'8 x 10'2 (3.25m x 3.10m)

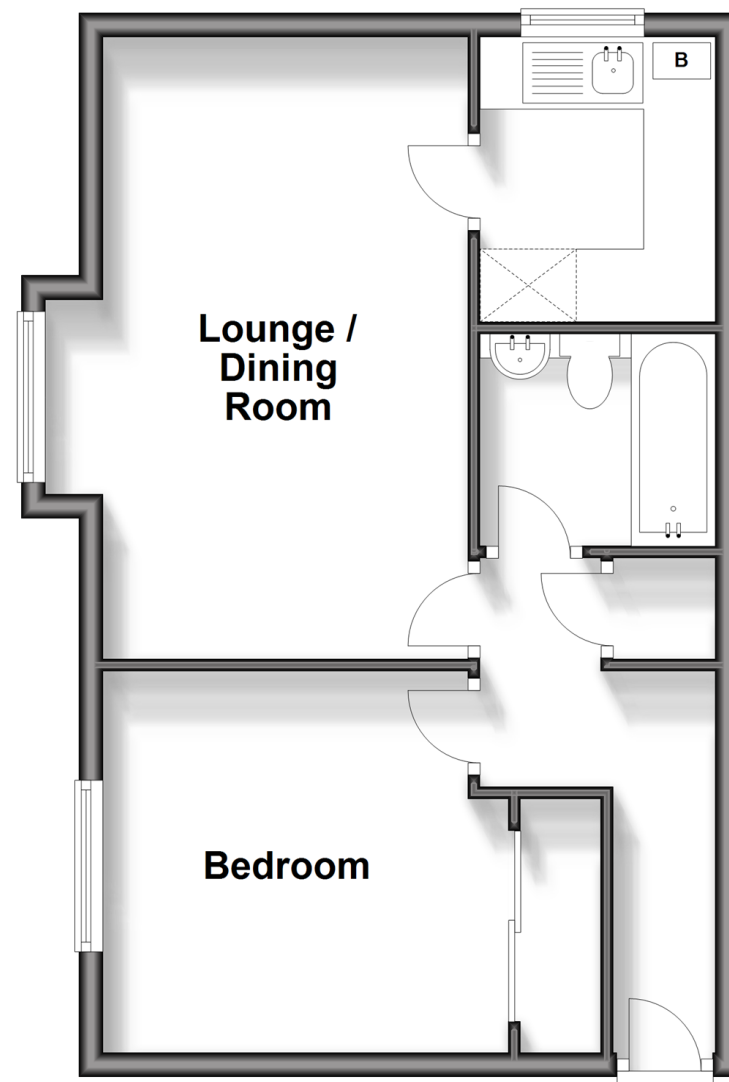
OUTSIDE

Allocated parking

Communal Grounds

Ground Floor

Approx. 43.6 sq. metres (469.8 sq. feet)



Call Shirley - 020 8654 3037 ■ cubittandwest.co.uk

- Legal advice should be taken to verify fixtures/fittings, planning, alterations and/or lease details
- Appliances & services are untested, dimensions are approximate and floor plans are not to scale



21711690/20250607/SR/CB