



Price
£650,000

Freehold

4x  2x  2x 

**Bridle Road, Shirley,
Croydon, Surrey, CR0**

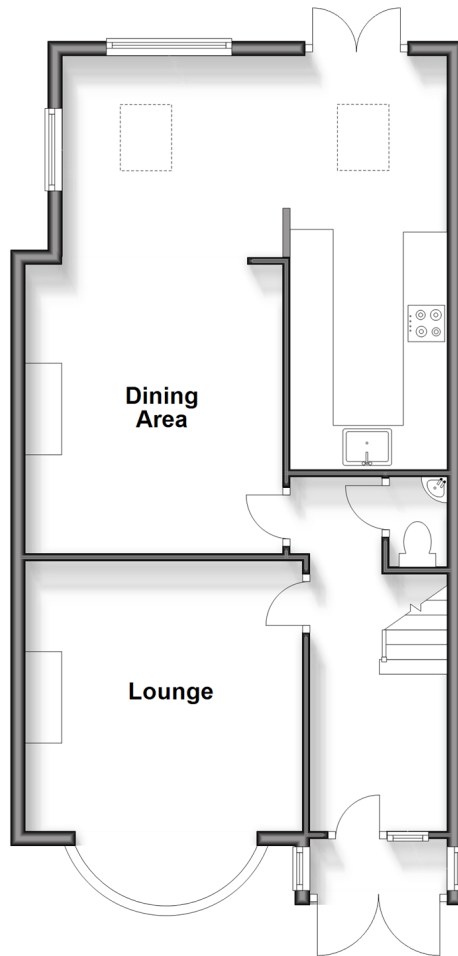
OVER 60?

Secure this property
for up to **59% less!**

cubitt & west
Helping you move forwards

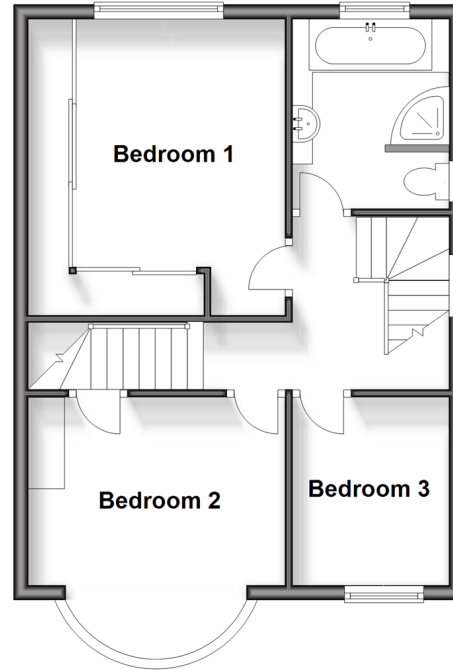
Ground Floor

Approx. 61.7 sq. metres (664.2 sq. feet)



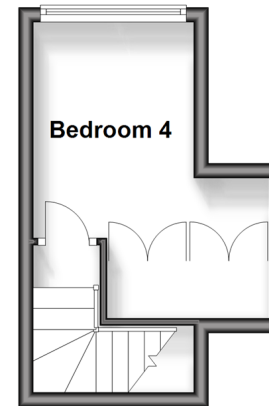
First Floor

Approx. 45.2 sq. metres (486.5 sq. feet)



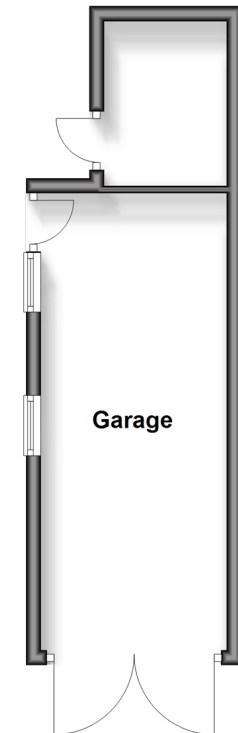
Second Floor

Approx. 13.1 sq. metres (141.0 sq. feet)



Outbuilding

Approx. 19.9 sq. metres (214.3 sq. feet)



Accommodation

GROUND FLOOR

Entrance Porch

Entrance Hallway

Cloakroom

Lounge: 14'7 x 14'6 (4.45m x 4.42m)

Dining Area: 12'7 x 11'9 (3.84m x 3.58m)

Family Area: 16'10 x 8'7 (5.13m x 2.62m)

Kitchen: 12'2 x 6'7 (3.71m x 2.01m)

FIRST FLOOR

Landing

Bedroom 1: 12'7 x 11'3 (3.84m x 3.43m)

Bedroom 2: 11'9 maximum (3.58m) narrowing to 10'8 (3.25m) x 11'2 (3.41m)

Bedroom 3: 8'3 x 6'9 (2.52m x 2.06m)

Family Bathroom

SECOND FLOOR

Bedroom 4: 10'8 x 7'1 (3.25m x 2.16m)

OUTBUILDING

Garage

OUTSIDE

Driveway

Front & Rear Garden



Main features

- No onward chain
- Delightful semi-detached house in sought after location
- Extended to provide living and entertaining space in the kitchen/dining/family area
- Spacious rear garden, large driveway and detached garage
- Excellent location for bus route into West Wickham and train station into London



Nearest Schools

Primary Schools: Spring Park Primary 0.1 miles, Oak Lodge Primary 0.4 miles, Benson Primary and Nursery School 0.5 miles
Secondary Schools: Orchard Park 0.7 miles, Shirley High School Performing Arts College 0.9 miles



Transport Information

Train Stations: West Wickham 0.8 miles, Eden Park 1.1 miles, Hayes 1.8 miles



Address

Bridle Road, Shirley, Croydon, Surrey, CR0



Directions

For directions to this property please contact us.



cubitt&west
Helping you move forwards

Call Shirley Branch 020 8654 3037 ■ cubittandwest.co.uk



- Legal advice should be taken to verify fixtures/fittings, planning, alterations and/or lease details
- Appliances & services are untested, dimensions are approximate and floor plans are not to scale
- Through a Homewise Home For Life Plan people aged 60+ can secure this property for up to 59% less, by purchasing a Lifetime Lease.



21711045/20241011/SR/RF