



Price
£325,000

Freehold

1x  2x  1x 

**Parsley Gardens,
Croydon, Surrey, CR0**

OVER 60?

Secure this property
for up to **59% less!**

cubitt & west
Helping you move forwards



Main features

- Secluded location in Shirley Oaks Village
- Deceptively spacious
- Choice of a downstairs wet room or upstairs bathroom
- Conservatory
- Situation in open ground with easy access to transport links

Accommodation

GROUND FLOOR

Entrance Hallway

Kitchen: 11'0 x 8'0 (3.36m x 2.44m)

Living Room: 14'11 x 13'2 (4.55m x 4.02m)

Conservatory: 18'11 x 15'5 (5.77m x 4.70m)

Wet Room

FIRST FLOOR

Landing

Bedroom: 10'11 x 8'8 (3.33m x 2.64m)

Bathroom

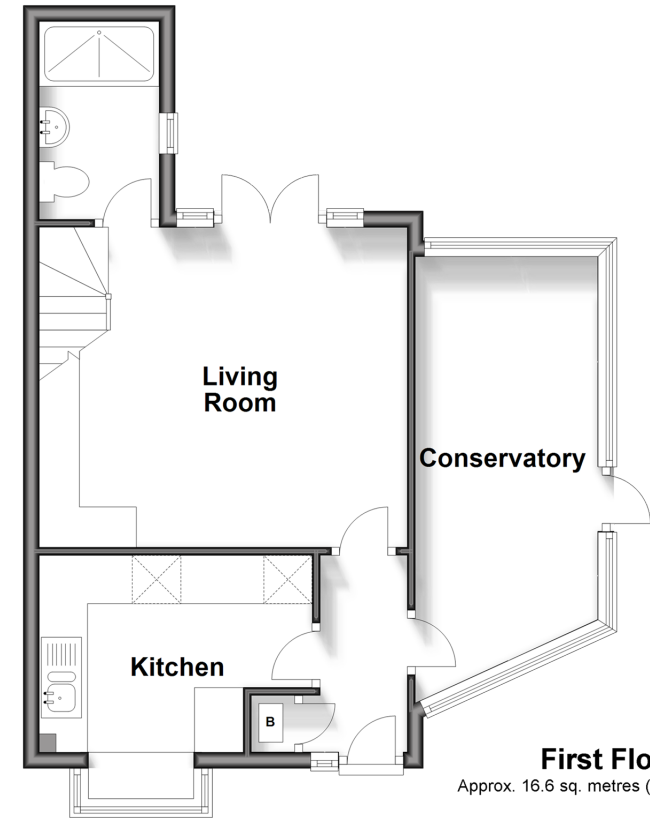
OUTSIDE

Front & Rear Garden

Allocated Parking

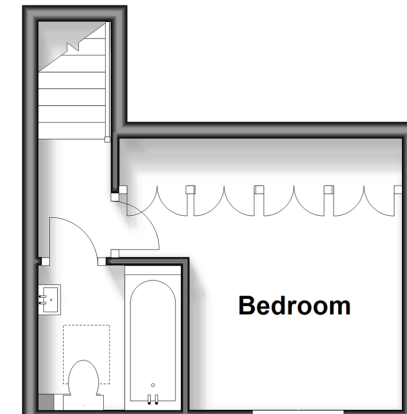
Ground Floor

Approx. 45.9 sq. metres (494.4 sq. feet)



First Floor

Approx. 16.6 sq. metres (178.3 sq. feet)



Call Shirley - 020 8654 3037 ■ cubittandwest.co.uk

- Legal advice should be taken to verify fixtures/fittings, planning, alterations and/or lease details
- Appliances & services are untested, dimensions are approximate and floor plans are not to scale
- Through a Homewise Home For Life Plan people aged 60+ can secure this property for up to 59% less, by purchasing a Lifetime Lease.



21711644/20241009/CR3/RF