



Guide Price

£900,000

Freehold

4x  2x  3x 

**Cheyne Walk, Croydon,
Surrey, CR0**

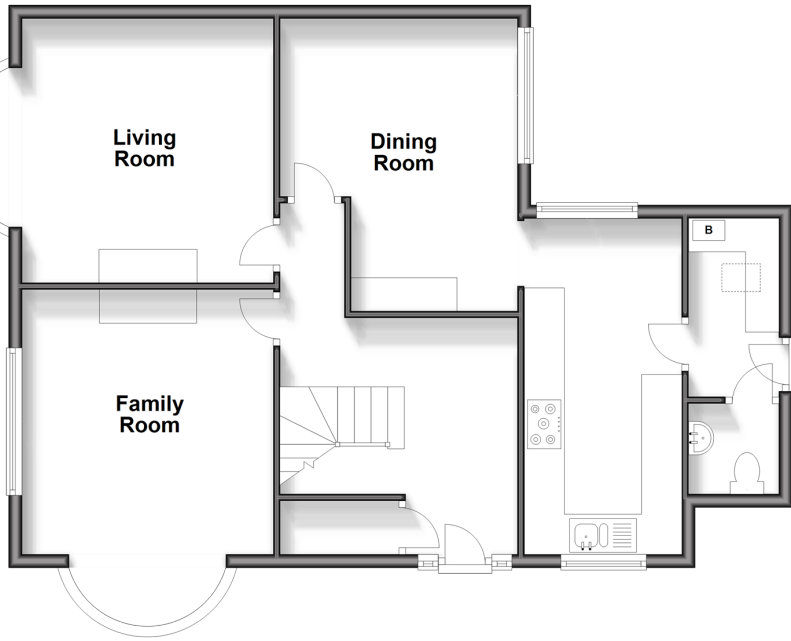
OVER 60?

Secure this property
for up to **59% less!**

cubitt & west
Helping you move forwards

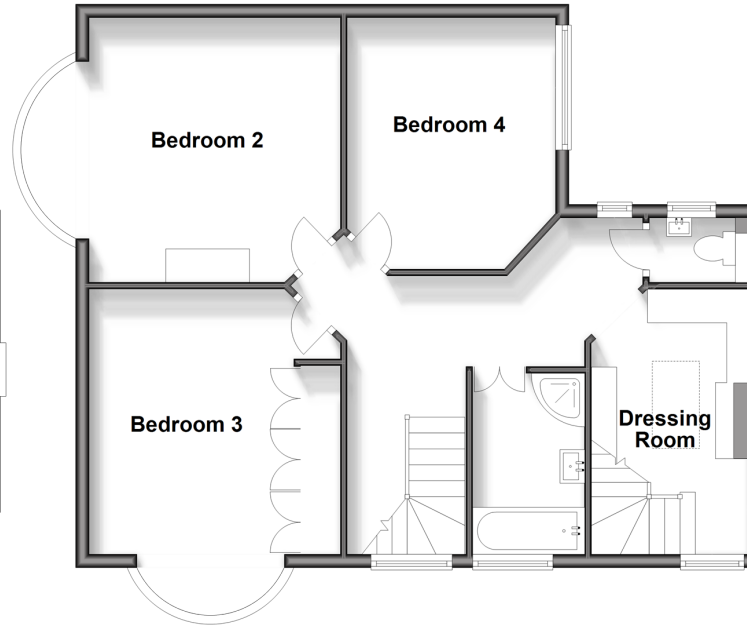
Ground Floor

Approx. 78.6 sq. metres (846.4 sq. feet)



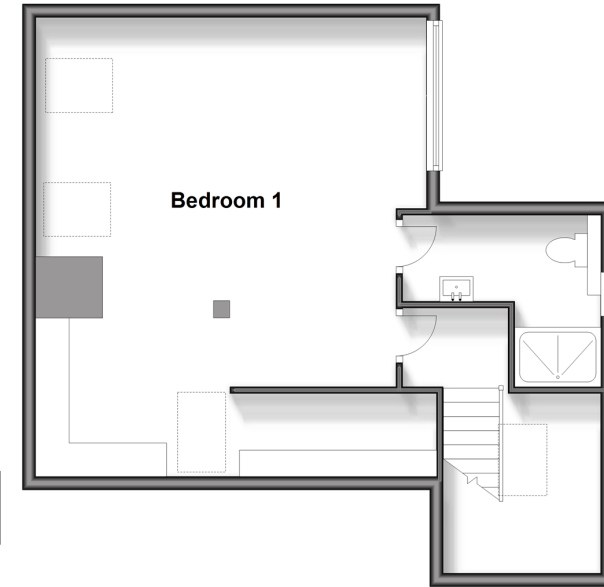
First Floor

Approx. 71.3 sq. metres (767.4 sq. feet)



Second Floor

Approx. 53.5 sq. metres (575.5 sq. feet)



Accommodation

GROUND FLOOR

Entrance Hallway
Living Room: 17'11 x 13'0 (5.46m x 3.97m)
Family Room: 18'0 x 12'1 (5.49m x 3.69m)
Dining Room: 12'3 (3.74m) narrowing to 8'9 (2.67m) x 11'5 (3.48m)
Kitchen: 16'7 x 7'8 (5.06m x 2.34m)
Utility Room: 8'7 x 4'3 (2.62m x 1.30m)
Cloakroom

FIRST FLOOR

Landing
Bedroom 2: 17'11 x 13'0 (5.46m x 3.97m)
Bedroom 3: 17'5 x 12'0 (5.31m x 3.66m)
Bedroom 4: 12'1 x 11'5 (3.69m x 3.48m)
Family Bathroom: 8'8 x 5'5 (2.64m x 1.65m)
Separate Toilet

SECOND FLOOR

Bedroom 1: 22'5 (6.84m) narrowing to 17'9 (5.41m) x 19'5 (5.92m)
Ensuite Shower Room

OUTSIDE

Courtyard Garden
Driveway



Main features

- Substantial semi detached house in a sought after location
- Large living spaces with double sized bedrooms and a feature bedroom 1 with an ensuite shower room
- Living room, family room and dining room perfect for entertaining family and friends
- Catchment area for many fantastic schools
- Excellent transport links to East Croydon Station

Nearest Schools

Primary Schools: Woodside Junior School 0.7 miles
Davidson Primary 0.7 miles, Oval Primary 0.8 miles
Secondary Schools: Trinity School 0.4 miles
Archbishop Tenison's CofE High School 0.6 miles
Oasis Academy Shirley Park 0.6 miles

Transport Information

Train Stations: East Croydon 0.9 miles
South Croydon 1.2 miles
Selhurst 1.3 miles

Address

Cheyne Walk, Croydon, Surrey, CR0

Directions

For directions to this property please contact us.



cubitt&west
Helping you move forwards

Call Shirley Branch 020 8654 3037 ■ cubittandwest.co.uk



- A private rental licensing scheme applies to some properties in this area, please contact us before proceeding
- Appliances & services are untested, dimensions are approximate and floor plans are not to scale

- Legal advice should be taken to verify fixtures/fittings, planning, alterations and/or lease details
- Through a Homewise Home For Life Plan people aged 60+ can secure this property for up to 59% less, by purchasing a Lifetime Lease.



21711605/20240803/SR/RF