



Price
£400,000

Freehold

3x  1x  1x 

**Laurel Crescent, Shirley,
Croydon, Surrey, CR0**

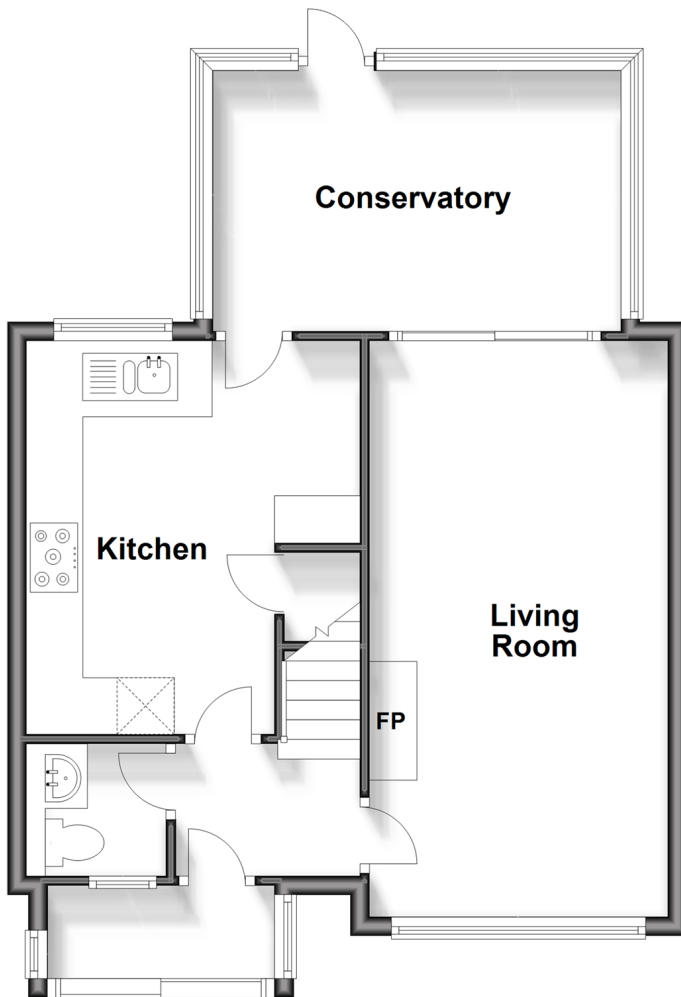
OVER 60?

Secure this property
for up to **59% less!**

cubitt & west
Helping you move forwards

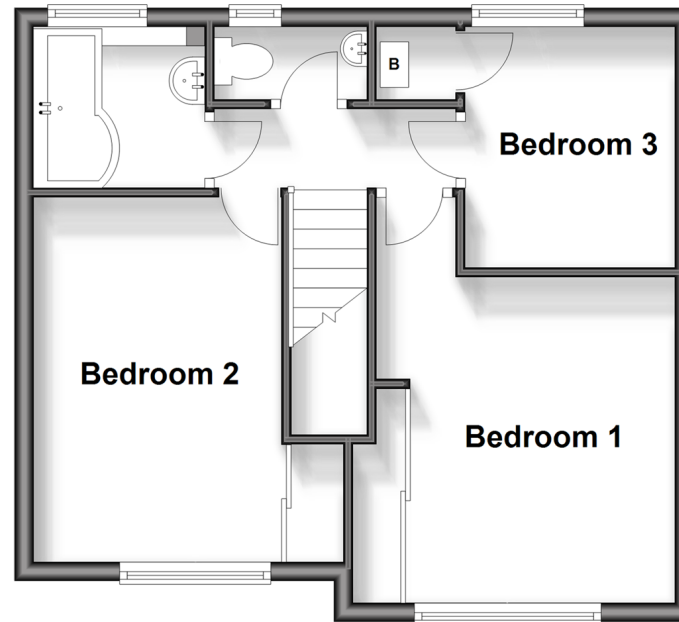
Ground Floor

Approx. 54.4 sq. metres (586.1 sq. feet)



First Floor

Approx. 39.7 sq. metres (427.2 sq. feet)



Accommodation

GROUND FLOOR

Entrance Porch

Entrance Hallway

Cloakroom: 4'11 x 4'4 (1.50m x 1.32m)

Living Room: 19'9 x 10'4 (6.02m x 3.15m)

Kitchen: 14'1 x 11'5 (4.30m x 3.48m)

Conservatory : 16'1 x 9'9 (4.91m x 2.97m)

FIRST FLOOR

Landing

Bedroom 1: 13'6 x 10'4 (4.12m x 3.15m)

Bedroom 2: 13'1 x 8'8 (3.99m x 2.64m)

Bedroom 3: 9'0 x 7'4 (2.75m x 2.24m)

Bathroom: 5'7 x 5'6 (1.70m x 1.68m)

Separate Toilet: 5'9 x 3'1 (1.75m x 0.94m)

OUTSIDE

Front Garden

Rear Garden

Driveway



Main features

- Spacious terraced house
- Upstairs bathroom with separate toilet
- Front and rear gardens
- Close to local amenities
- Offered with no onward chain



Nearest Schools

Primary Schools: Spring Park Primary 0.2 miles
Benson Primary and Nursery School 0.6 miles
Oak Lodge Primary 0.8 miles
Secondary Schools: Beckmead School 0.7 miles
Shirley High School Performing Arts College 0.9 miles



Transport Information

Train Stations: West Wickham 1.0 miles
Eden Park 1.5 miles



Address

Laurel Crescent, Shirley, Croydon, Surrey, CR0



Directions

For directions to this property please contact us.



cubitt&west
Helping you move forwards

Call Shirley Branch 020 8654 3037 ■ [cubittandwest.co.uk](https://www.cubittandwest.co.uk)



- A private rental licensing scheme applies to some properties in this area, please contact us before proceeding
- Appliances & services are untested, dimensions are approximate and floor plans are not to scale

- Legal advice should be taken to verify fixtures/fittings, planning, alterations and/or lease details
- Through a Homewise Home For Life Plan people aged 60+ can secure this property for up to 59% less, by purchasing a Lifetime Lease.



21711482/20240608/BF/PH