

OVER 60?

Secure this property
for up to **59% less!**



Guide Price

£415,000

Freehold

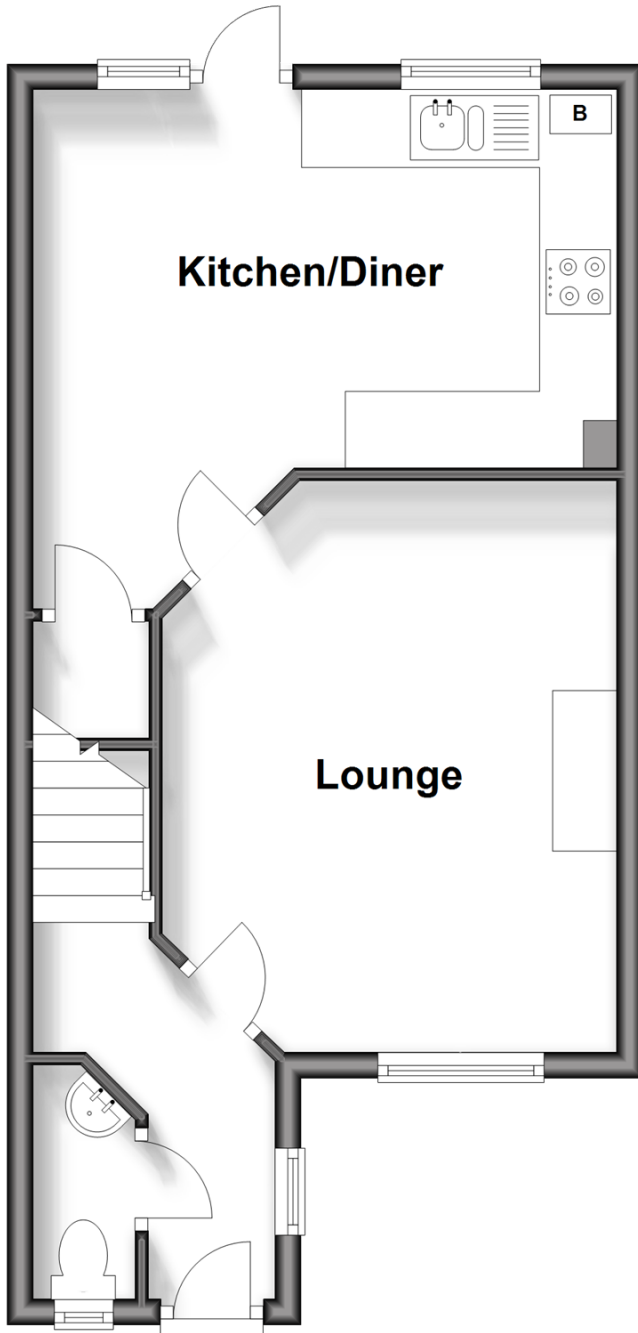
3x  1x  1x 

Kelvin Gardens, Croydon, Surrey, CR0

cubitt & west
Helping you move forwards

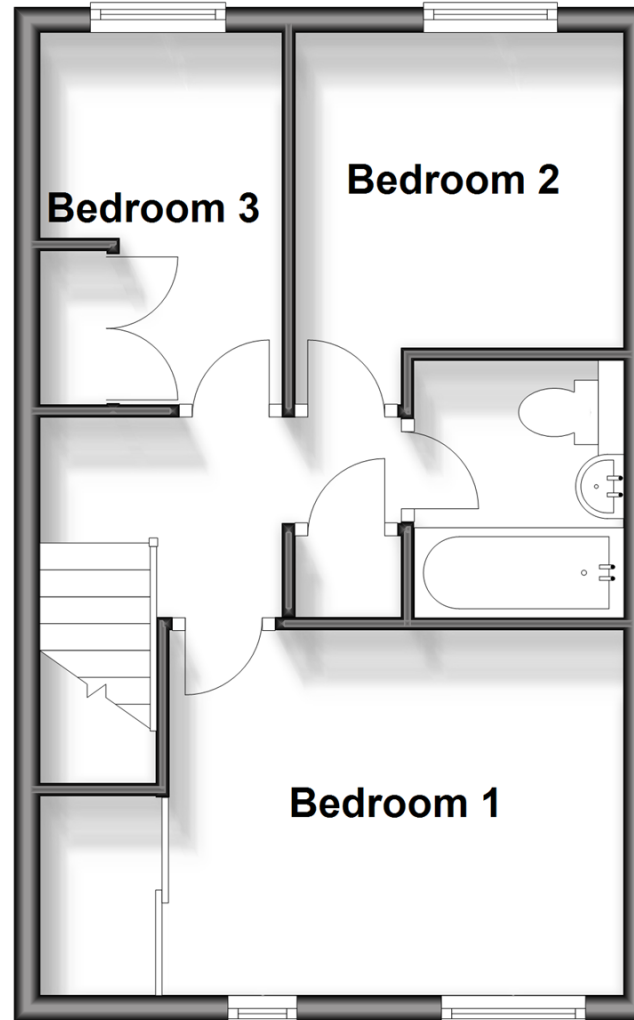
Ground Floor

Approx. 37.7 sq. metres (406.0 sq. feet)



First Floor

Approx. 34.1 sq. metres (367.0 sq. feet)



Accommodation

GROUND FLOOR

Entrance Hallway

Lounge: 14'11 x 11'6 (4.55m x 3.51m)

Kitchen/Diner: 14'10 x 12'3 (4.52m x 3.74m)

Cloakroom

FIRST FLOOR

Landing

Bedroom 1: 11'6 up to fitted wardrobes x 9'5 (3.51m x 2.87m)

Bedroom 2: 8'3 x 7'9 (2.52m x 2.36m)

Bedroom 3: 9'5 x 6'5 (2.87m x 1.96m)

Bathroom: 6'6 x 5'0 (1.98m x 1.53m)

OUTSIDE

Front and Rear Garden



Main features

- Wonderful terraced house
- Well presented
- Off street parking
- Close to local amenities
- Great transport links



Nearest Schools

Primary Schools: West Thornton Primary 0.3 miles
Kingsley Primary 0.5 miles, Gonville Primary 0.7 miles
Secondary Schools:
The Archbishop Lanfranc School 0.4 miles
Carew Manor School 0.9 miles

Transport Information

Train Stations: West Croydon 1.1 miles
Waddon 1.1 miles, Hackbridge 1.1 miles

Address

Kelvin Gardens, Croydon, Surrey, CR0

Directions

For directions to this property please contact us.





cubitt&west
Helping you move forwards

Call Shirley Branch 020 8654 3037 ■ [cubittandwest.co.uk](https://www.cubittandwest.co.uk)



- A private rental licensing scheme applies to some properties in this area, please contact us before proceeding
- Appliances & services are untested, dimensions are approximate and floor plans are not to scale

- Legal advice should be taken to verify fixtures/fittings, planning, alterations and/or lease details
- Through a Homewise Home For Life Plan people aged 60+ can secure this property for up to 59% less, by purchasing a Lifetime Lease.



21711529/20240523/RF/PH