



**Price**  
**£550,000**

**Freehold**

3x  1x  2x 

**Bridle Road, Shirley,  
Croydon, CR0**

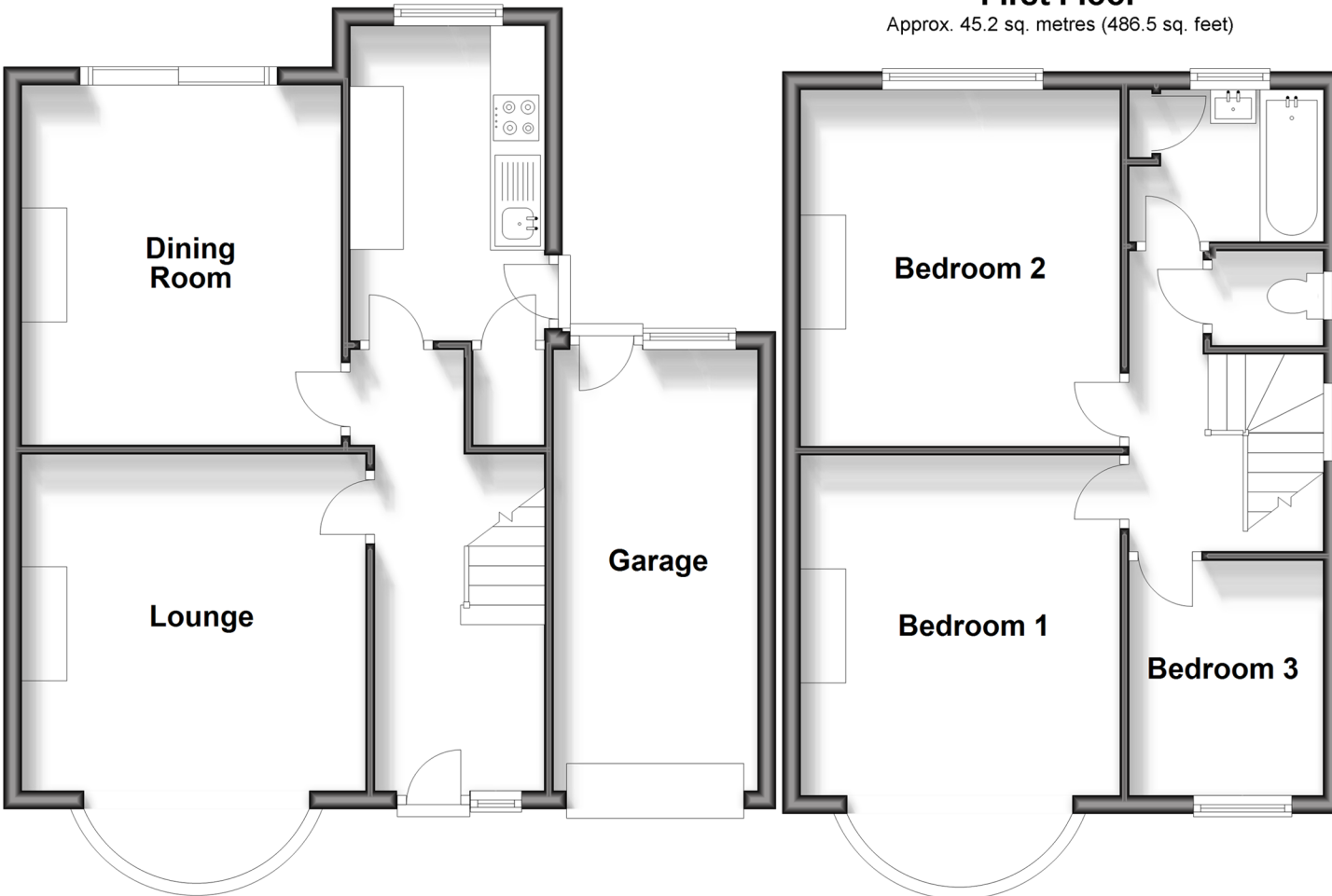
**OVER 60?**

Secure this property  
for up to **59% less!**

**cubitt & west**  
Helping you move forwards

## Ground Floor

Approx. 58.0 sq. metres (624.0 sq. feet)



## First Floor

Approx. 45.2 sq. metres (486.5 sq. feet)

## Accommodation

### GROUND FLOOR

Entrance Hallway

Lounge : 14'9 into bay x 12'5 (4.50m x 3.79m)

Dining Room: 13'2 x 11'9 (4.02m x 3.58m)

Kitchen: 11'3 x 7'1 (3.43m x 2.16m)

### FIRST FLOOR

Landing

Bedroom 1: 12'7 into bay x 11'8 (3.84m x 3.56m)

Bedroom 2: 12'7 x 11'3 (3.84m x 3.43m)

Bedroom 3: 8'3 x 6'9 (2.52m x 2.06m)

Bathroom

Separate Toilet

### OUTSIDE

Front and Rear Garden

Garage

Driveway



## Main features

- Spacious semi-detached house
- Newly refurbished
- Benefits from a garage and a driveway
- Close to excellent amenities, schools and transport links to East Croydon
- No onward chain



### Nearest Schools

Primary Schools: Spring Park Primary 0.1 miles  
Oak Lodge Primary 0.4 miles  
Benson Primary and Nursery School 0.5 miles  
Secondary Schools: Beckmead School 0.3 miles  
Langley Park School for Girls and Boys 1.1 miles



### Transport Information

Train Stations: West Wickham 0.8 miles  
Eden Park 1.1 miles, Hayes 1.8 miles



### Address

Bridle Road, Shirley, Croydon, CR0



### Directions

For directions to this property please contact us.



**cubitt&west**  
Helping you move forwards

Call Shirley Branch 020 8654 3037 ■ [cubittandwest.co.uk](https://www.cubittandwest.co.uk)



- A private rental licensing scheme applies to some properties in this area, please contact us before proceeding
- Appliances & services are untested, dimensions are approximate and floor plans are not to scale

- Legal advice should be taken to verify fixtures/fittings, planning, alterations and/or lease details
- Through a Homewise Home For Life Plan people aged 60+ can secure this property for up to 59% less, by purchasing a Lifetime Lease.



21711549/20240515/CB/CB