



Price
£595,000

Freehold

3x  1x  2x 

**Bennetts Way, Shirley,
Surrey, CR0**

OVER 60?

Secure this property
for up to **59% less!**

cubitt & west
Helping you move forwards

Ground Floor

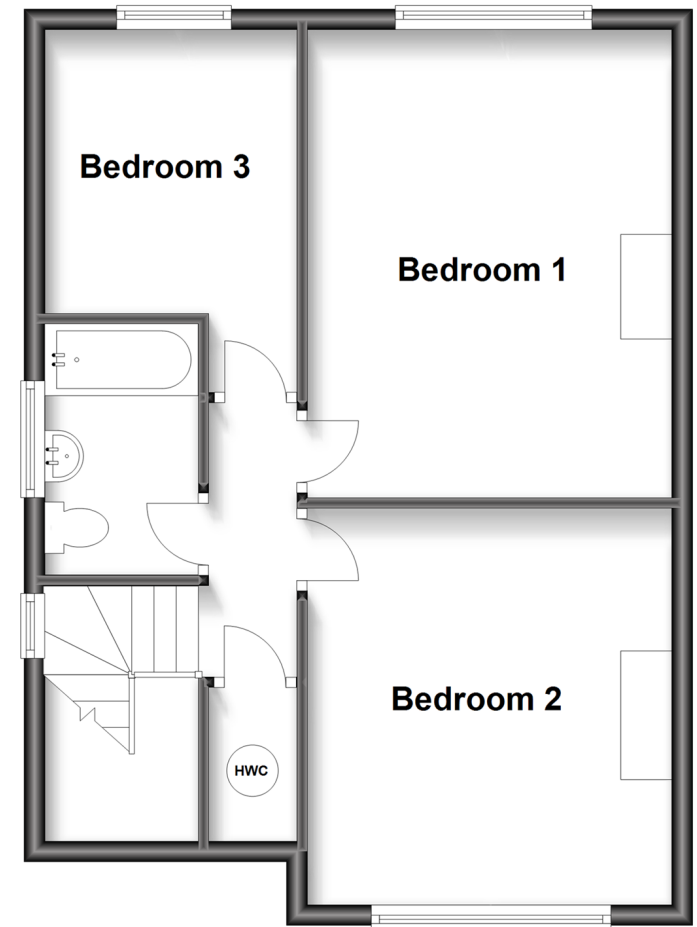
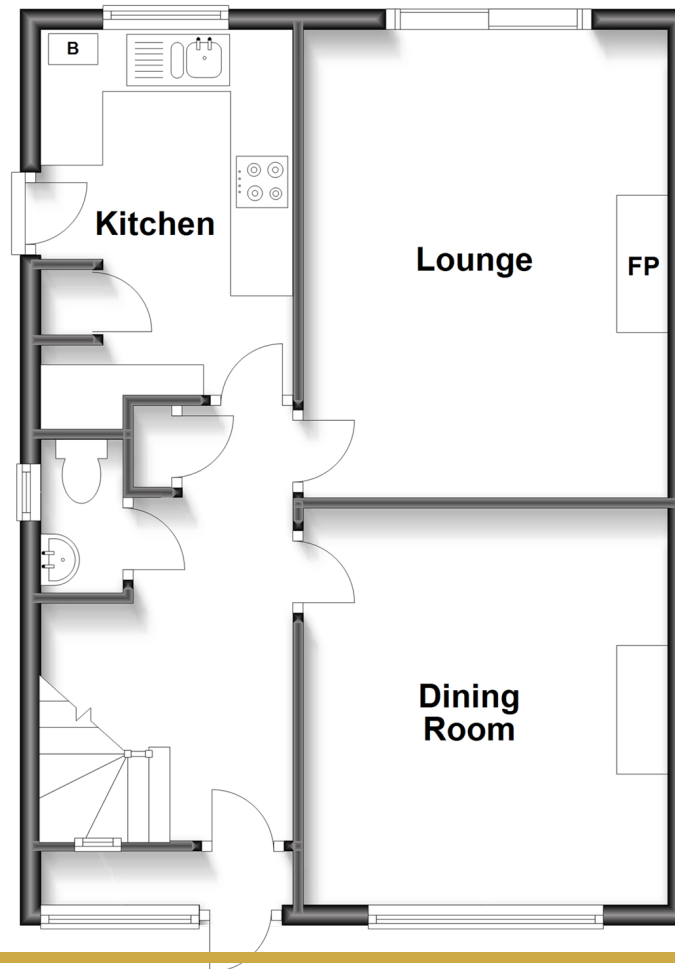
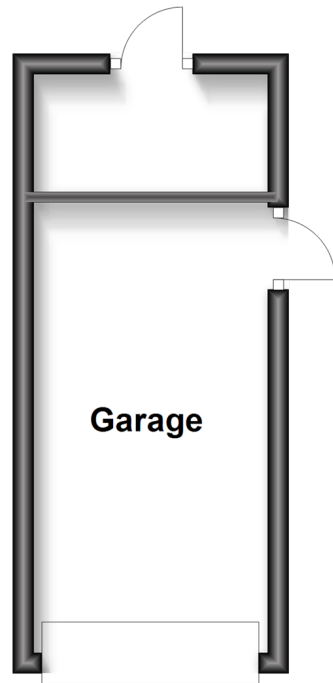
Approx. 51.0 sq. metres (549.4 sq. feet)

First Floor

Approx. 50.3 sq. metres (541.2 sq. feet)

Outbuilding

Approx. 12.8 sq. metres (137.9 sq. feet)



Accommodation

GROUND FLOOR

Entrance Hall

Cloackroom

Dining Room: 12'7 x 11'7 (3.84m x 3.53m)

Lounge: 15'0 x 11'5 (4.58m x 3.48m)

Kitchen: 11'4 x 8'2 (3.46m x 2.49m)

FIRST FLOOR

Landing

Bedroom 1: 14'10 x 11'5 (4.52m x 3.48m)

Bedroom 2: 12'8 x 11'6 (3.86m x 3.51m)

Bedroom 3: 9'1 x 8'6 (2.77m x 2.59m)

Bathroom

OUTSIDE

Garage & Driveway

Front & Rear Gardens



Main features

- Delightful semi-detached home
- Spacious rooms throughout and garage to the side
- Family bathroom and separate downstairs cloakroom
- Large rear garden with views towards London
- Quiet cul-de-sac location with Millers Pond on the doorstep



Nearest Schools

Primary Schools: Spring Park Primary 0.2 miles
Benson Primary and Nursery School 0.3 miles, St John's CofE Primary 0.6 miles
Secondary Schools: Beckmead School 0.4 miles
Edenham High School 0.7 miles



Transport Information

Train Stations: West Wickham 1.4 miles, Eden Park 1.6 miles, Clock House 2.4 miles



Address

Bennetts Way, Shirley, Surrey, CR0



Directions

For directions to this property please contact us.



cubitt&west
Helping you move forwards

Call Shirley Branch 020 8654 3037 ■ cubittandwest.co.uk



- A private rental licensing scheme applies to some properties in this area, please contact us before proceeding
- Appliances & services are untested, dimensions are approximate and floor plans are not to scale

- Legal advice should be taken to verify fixtures/fittings, planning, alterations and/or lease details
- Through a Homewise Home For Life Plan people aged 60+ can secure this property for up to 59% less, by purchasing a Lifetime Lease.

EPC RATING	CURRENT:	POTENTIAL:
	D(62)	B(32)
21711443/20240226/BF/RF		