



Guide Price
£450,000

Freehold

3x  2x  2x 

**Galpins Road, Thornton
Heath, Surrey, CR7**

OVER 60?

Secure this property
for up to **59% less!**

cubitt&west
Helping you move forwards



Main features

- Splendid end-of-terrace house in an ideal location
- Lounge and dining room are ideal for entertaining
- Relax in the conservatory with family and friends
- Driveway and pleasant rear garden
- Situated close to transport and all local amenities

Accommodation

GROUND FLOOR

Entrance Porch
 Entrance Hall
 Lounge: 14'9 x 10'9 (4.50m x 3.28m)
 Dining Room: 12'5 x 10'2 (3.79m x 3.10m)
 Kitchen: 9'6 x 6'0 (2.90m x 1.83m)
 Conservatory: 13'7 x 9'8 (4.14m x 2.95m)
 Shower Room

FIRST FLOOR

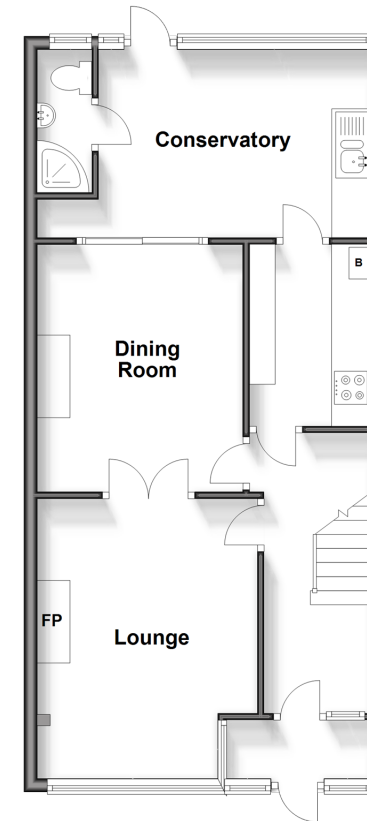
Landing
 Bedroom 1: 14'4 x 10'5 (4.37m x 3.18m)
 Bedroom 2: 12'11 x 10'6 (3.94m x 3.20m)
 Bedroom 3: 7'5 x 6'1 (2.26m x 1.86m)
 Bathroom

OUTSIDE

Driveway
 Rear Garden

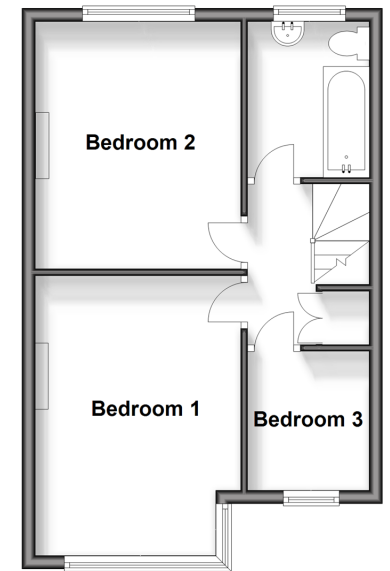
Ground Floor

Approx. 56.1 sq. metres (603.7 sq. feet)



First Floor

Approx. 38.8 sq. metres (417.5 sq. feet)



Call Shirley - 020 8654 3037 ■ cubittandwest.co.uk

- A private rental licensing scheme applies to some properties in this area, please contact us before proceeding
- Legal advice should be taken to verify fixtures/fittings, planning, alterations and/or lease details
- Appliances & services are untested, dimensions are approximate and floor plans are not to scale
- Through a Homewise Home For Life Plan people aged 60+ can secure this property for up to 59% less, by purchasing a Lifetime Lease.



21711434/20240219/TA/PH