



Price
£350,000

Leasehold

2x 🛏️ 2x 🚿 1x 🚗

**Peregrine Gardens,
Shirley, Croydon,
Surrey, CR0**

cubitt & west
Helping you move forwards



Main features

- Fantastic mid-terrace home in a popular retirement development
- Spacious lounge
- Upstairs bathroom and own patio
- Communal gardens and garage en-bloc and residents' parking
- Excellent location close to shops, doctor's surgery, dentist and transport links

Accommodation

GROUND FLOOR

Entrance Hall
 Lounge: 15'0 x 14'7 (4.58m x 4.45m)
 Kitchen: 9'9 x 7'8 (2.97m x 2.34m)
 Shower Room

FIRST FLOOR

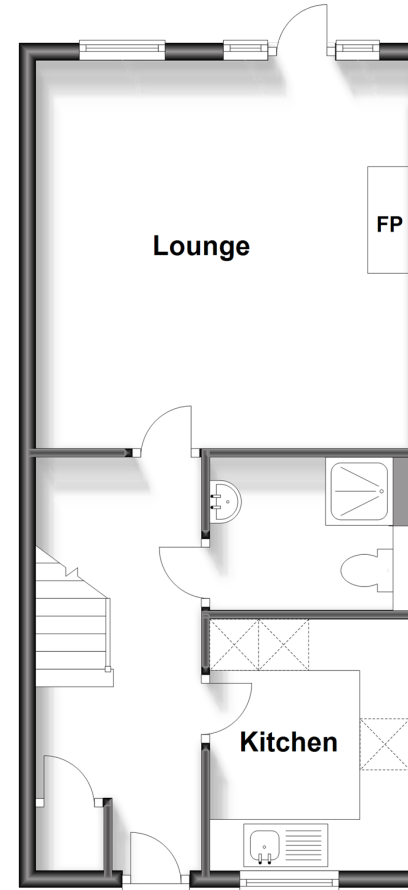
Landing
 Bedroom 1: 14'6 x 11'8 (4.42m x 3.56m)
 Bedroom 2: 14'6 x 8'11 (4.42m x 2.72m)
 Bathroom

OUTSIDE

Communal Gardens
 Garage En-Bloc
 Patio Area
 Residents' Parking

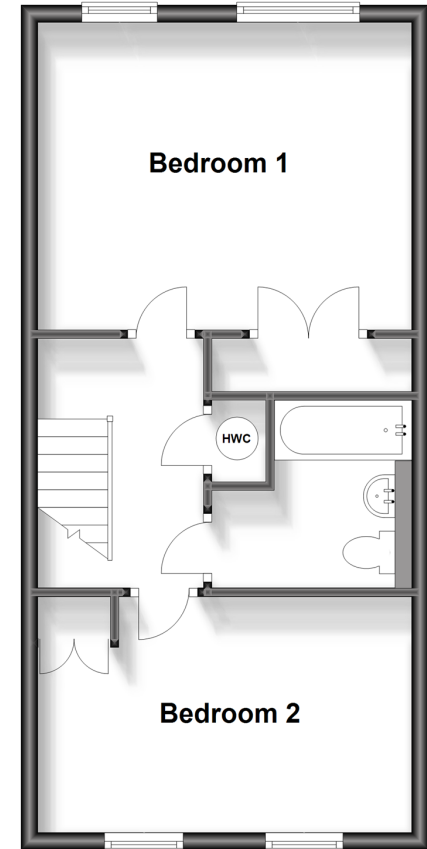
Ground Floor

Approx. 42.2 sq. metres (454.7 sq. feet)



First Floor

Approx. 42.2 sq. metres (454.7 sq. feet)



Call Shirley - 020 8654 3037 ■ cubittandwest.co.uk

- A private rental licensing scheme applies to some properties in this area, please contact us before proceeding
- Legal advice should be taken to verify fixtures/fittings, planning, alterations and/or lease details
- Appliances & services are untested, dimensions are approximate and floor plans are not to scale



21710528/20240219/TA/RF