



Price
£285,000

Leasehold

2x  2x  1x 

**Prospects Court,
Holmesdale Road,
Reigate, Surrey, RH2**

OVER 60?

Secure this property
for up to **59% less!**

cubitt&west
Helping you move forwards



Main features

- Spacious modern apartment
- 2 double bedrooms, main bedroom with en-suite shower room
- Short walk to train station & shops
- Kitchen with built-in appliances & large lounge/dining area
- Under floor heating & double glazing
- Allocated parking & no onward chain

Accommodation

FIRST FLOOR

Entrance Hall: 11'7 x 3'0 (3.53m x 0.92m) plus 12'5 x 3'0 (3.79m x 0.92m)

Lounge/Dining Area: 16'5 x 12'1 (5.01m x 3.69m)

Kitchen: 12'1 x 8'5 (3.69m x 2.57m)

Bedroom 1: 12'0 x 9'1 (3.66m x 2.77m)

En-suite Shower Room: 6'0 x 5'4 (1.83m x 1.63m)

Bedroom 2: 11'5 x 8'5 (3.48m x 2.57m)

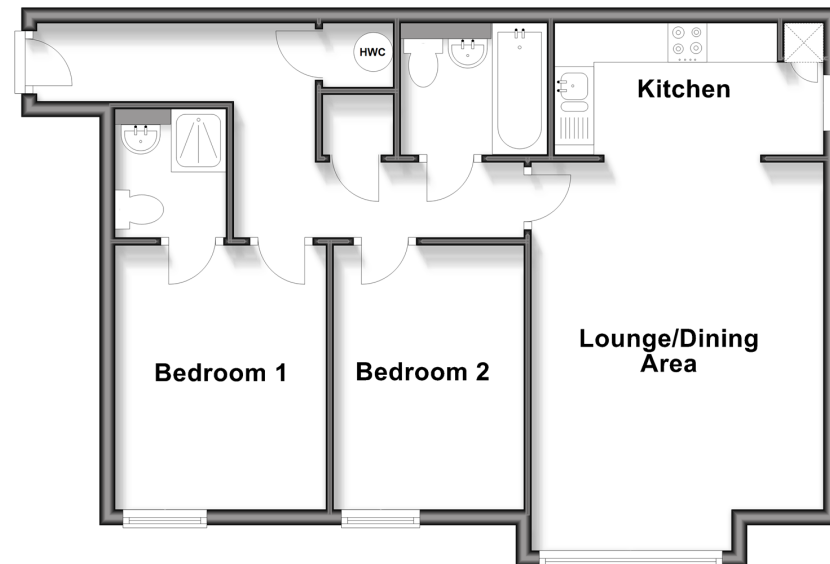
Bathroom: 6'1 x 5'6 (1.86m x 1.68m)

OUTSIDE

Allocated Parking

First Floor

Approx. 58.9 sq. metres (633.9 sq. feet)



Call Reigate - 01737 222020 ■ cubittandwest.co.uk

- Legal advice should be taken to verify fixtures/fittings, planning, alterations and/or lease details
- Appliances & services are untested, dimensions are approximate and floor plans are not to scale
- Through a Homewise Home For Life Plan people aged 60+ can secure this property for up to 50% less, by purchasing a Lifetime Lease.



21613600/20250915/NF1/JB1