



Guide Price
£450,000

Freehold

3x  1x  2x 

**Rushetts Road, Reigate,
Surrey, RH2**

cubitt&west
Helping you move forwards



Main features

- 1950's family home in a popular South Reigate location
- Conveniently located for excellent schools & local amenities
- Scope to modernise & extend, subject to planning permission
- Sunny rear garden with patio & brick built store
- Front & rear garden, off road parking

Accommodation

GROUND FLOOR

Entrance Hall

Living Room: 12'8 x 12'6 (3.86m x 3.81m)

Kitchen: 9'5 x 9'3 (2.87m x 2.82m)

Dining Room: 9'3 x 9'0 (2.82m x 2.75m)

FIRST FLOOR

Landing

Bedroom 1 : 11'6 x 9'9 (3.51m x 2.97m)

Bedroom 2: 10'8 x 8'8 (3.25m x 2.64m)

Bedroom 3: 8'8 x 7'9 (2.64m x 2.36m)

Shower Room: 7'8 x 5'4 (2.34m x 1.63m)

OUTSIDE

Front & Rear Garden

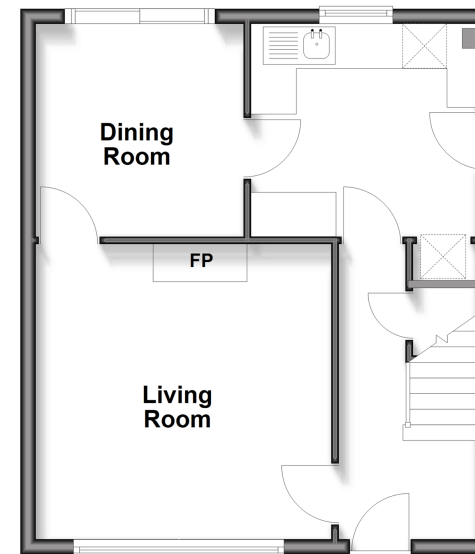
Brick Store (with power): 10'5 x 4'9 (3.18m x 1.45m)

Shed

Off Road Parking

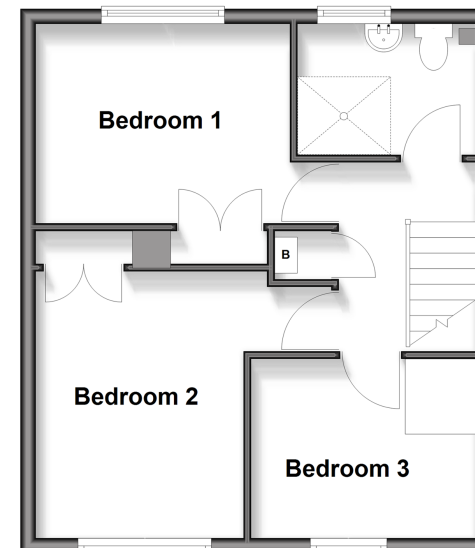
Ground Floor

Approx. 40.0 sq. metres (430.8 sq. feet)



First Floor

Approx. 38.7 sq. metres (416.3 sq. feet)



Call Reigate - 01737 222020 ■ cubittandwest.co.uk

- Legal advice should be taken to verify fixtures/fittings, planning, alterations and/or lease details
- Appliances & services are untested, dimensions are approximate and floor plans are not to scale



21613621/20251111/KH/KH