



Guide Price
£725,000

Freehold

3x  1x  2x 

**Cronks Hill Close,
Redhill, Surrey, RH1**

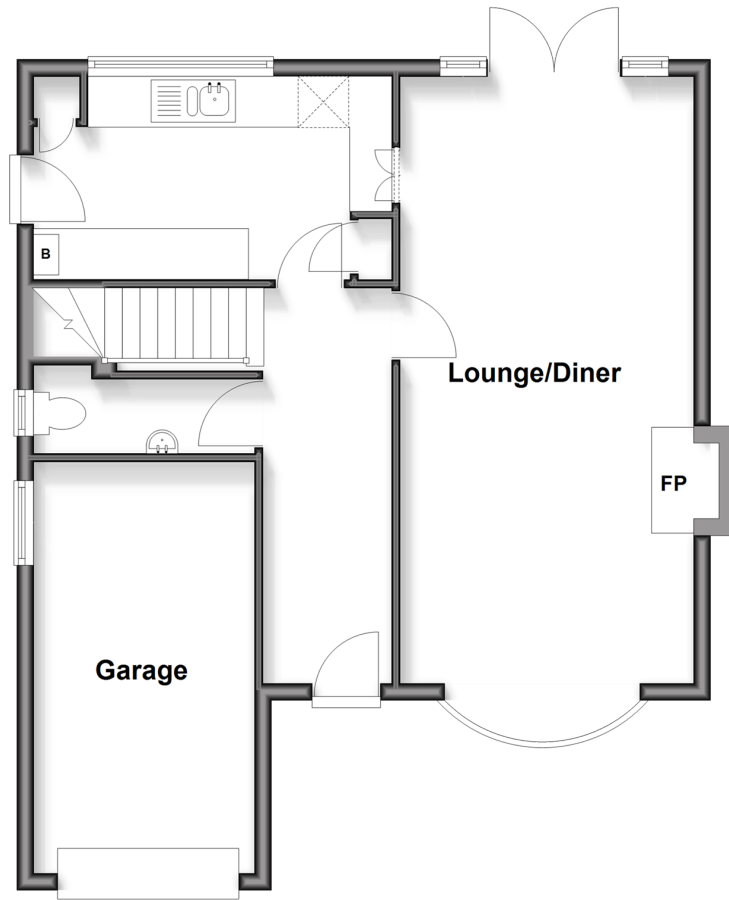
OVER 60?

Secure this property
for up to **59% less!**

cubitt&west
Helping you move forwards

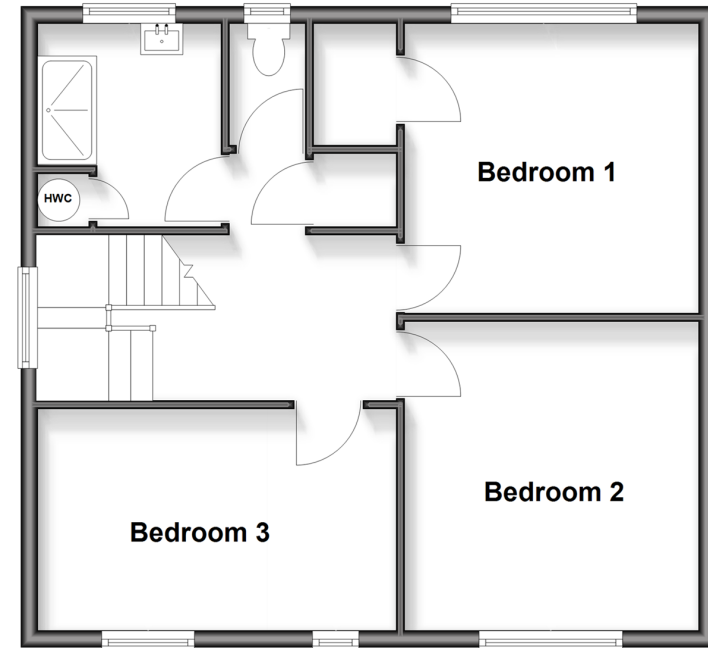
Ground Floor

Approx. 62.3 sq. metres (670.8 sq. feet)



First Floor

Approx. 56.6 sq. metres (609.0 sq. feet)



Accommodation

GROUND FLOOR

Entrance Hall

Lounge/Diner: 26'8 x 11'4 (8.13m x 3.46m)

Kitchen/Breakfast Room: 14'0 x 7'9 (4.27m x 2.36m)

Cloakroom

FIRST FLOOR

Landing

Bedroom 1: 11'6 x 11'2 (3.51m x 3.41m)

Bedroom 2: 12'3 x 11'5 (3.74m x 3.48m)

Bedroom 3: 14'0 x 8'7 (4.27m x 2.62m)

Shower Room: 8'0 x 7'9 (2.44m x 2.36m)

Separate Toilet

OUTSIDE

Front & Rear Garden

Driveway for 2 Cars

Integral Garage: 16'6 x 8'2 (5.03m x 2.49m)



Main features

- Spacious detached house in exclusive cul-de-sac, private established gardens, no onward chain
- Large lounge/diner, 3 double bedrooms
- Gas central heating, double glazed, parking for 2 cars & integral garage
- Scope of improvement/extension (subject to planning permission)
- Great location, accessible to Reigate & Redhill, train stations, scenic walks, schools & local shops



Nearest Schools

Primary Schools: St John's Primary 0.3 miles, Brambletye Junior School 0.9 miles, St Joseph's Catholic Primary, Redhill 1.0 miles
Secondary Schools: Dunottar School 0.2 miles, Reigate School 0.4 miles, Reigate Grammar School 0.7 miles



Transport Information

Train Stations: Earlswood 0.5 miles, Redhill 1.2 miles, Reigate 1.3 miles



Address

Cronks Hill Close, Redhill, Surrey, RH1



Directions

For directions to this property please contact us.



cubitt&west
Helping you move forwards

Call Reigate Branch 01737 222020 ■ cubittandwest.co.uk



- The seller is a person connected with Cubitt & West as defined in the Estate Agents Act 1979
- Appliances & services are untested, dimensions are approximate and floor plans are not to scale

- Legal advice should be taken to verify fixtures/fittings, planning, alterations and/or lease details
- Through a Homewise Home For Life Plan people aged 60+ can secure this property for up to 50% less, by purchasing a Lifetime Lease.



21613613/20251101/JB1/JB1