



Price

£320,000

Leasehold

2x  2x  1x 

Hillview, Doods Road,
Reigate, Surrey, RH2

OVER 60?

Secure this property
for up to **59% less!**

cubitt&west
Helping you move forwards



Main features

- A spacious, modern apartment
- Modern kitchen with built-in appliances, en-suite bathroom & separate shower room
- Gas central heating & double glazing
- Allocated parking for 1 car
- Views over communal gardens to the front & rear
- Short walk to town & station

Accommodation

GROUND FLOOR

Entrance Hall: 9'5 x 5'6 (2.87m x 1.68m) plus 12'9 x 3'0 (3.89m x 0.92m)

Lounge/Diner: 17'7 x 13'6 (5.36m x 4.12m)

Kitchen: 12'7 x 6'0 (3.84m x 1.83m)

Bedroom 1: 14'0 maximum x 9'5 maximum (4.27m x 2.87m)

En-suite Bathroom: 8'1 x 6'5 (2.47m x 1.96m)

Bedroom 2: 10'3 x 9'6 (3.13m x 2.90m)

Shower Room: 8'4 x 4'7 (2.54m x 1.40m)

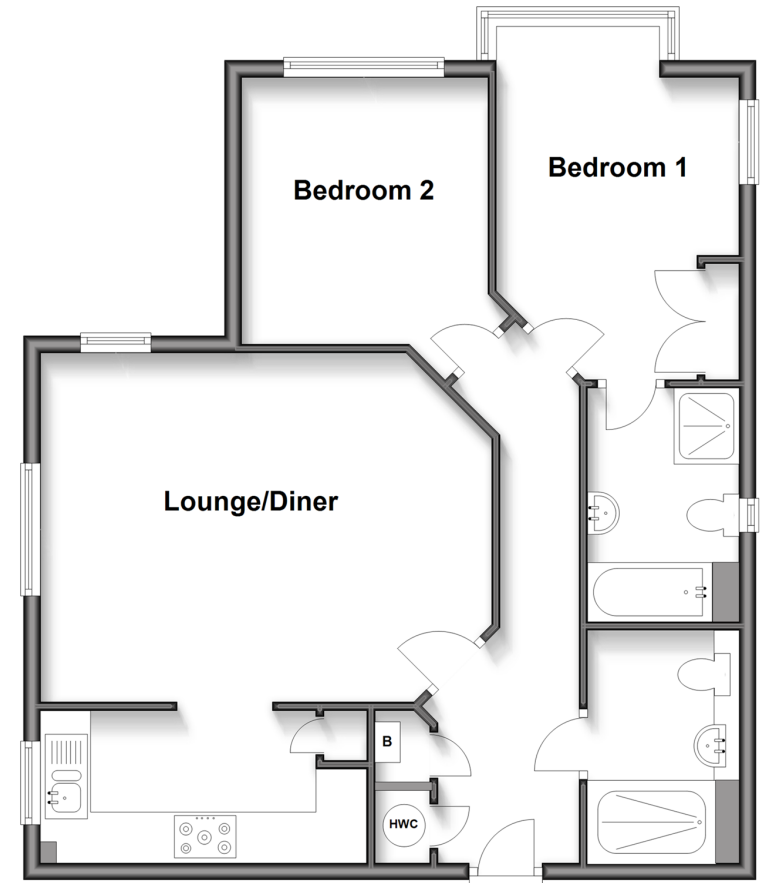
OUTSIDE

Communal Gardens

Allocated Parking for 1 Car

Ground Floor

Approx. 69.7 sq. metres (750.2 sq. feet)



Call Reigate - 01737 222020 ■ cubittandwest.co.uk

- Legal advice should be taken to verify fixtures/fittings, planning, alterations and/or lease details
- Appliances & services are untested, dimensions are approximate and floor plans are not to scale
- Through a Homewise Home For Life Plan people aged 60+ can secure this property for up to 59% less, by purchasing a Lifetime Lease.



21613536/20250422/NF1/JB1