



**Price**  
**£425,000**

**Freehold**

3x  1x  1x 

**Potters Way, Reigate,  
Surrey, RH2**

**OVER 60?**

Secure this property  
for up to **59% less!**

**cubitt & west**  
Helping you move forwards



## Main features

- A spacious 1950's semi-detached house, no onward chain
- Large garden, parking for 2/3 cars
- Double glazed, lean to
- In need of modernisation
- Scope for extension (subject to planning permission)
- Great location, walking distance of excellent schools & shops

## Accommodation

### GROUND FLOOR

- Entrance Hall: 12'0 x 6'0 (3.66m x 1.83m)
- Lounge: 13'7 x 12'0 (4.14m x 3.66m)
- Kitchen/Diner: 19'6 x 9'0 (5.95m x 2.75m)
- Lean To: 19'0 x 9'4 (5.80m x 2.85m)

### FIRST FLOOR

- Landing
- Bedroom 1: 12'0 x 10'0 (3.66m x 3.05m)
- Bedroom 2: 13'0 x 8'8 (3.97m x 2.64m)
- Bedroom 3: 9'0 x 7'7 (2.75m x 2.31m)
- Shower Room: 7'8 x 5'4 (2.34m x 1.63m)

### OUTSIDE

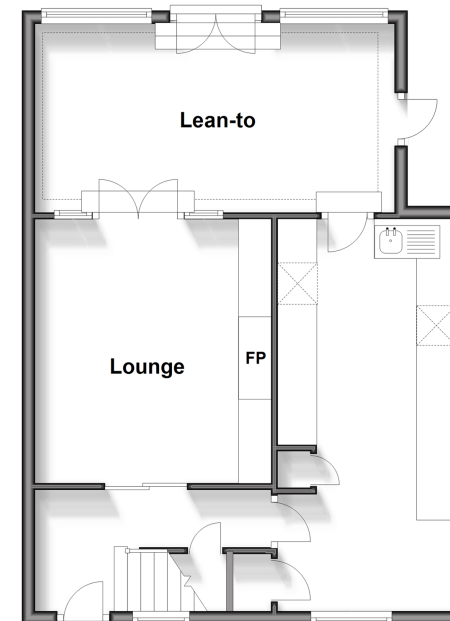
- Front Garden
- Drive for 3 Cars
- Rear Garden
- 2 Brick Built Stores

Call Reigate - 01737 222020 ■ [cubittandwest.co.uk](http://cubittandwest.co.uk)

- If buying to let, the energy rating will need to be improved to at least 'E' rating before you can let the property
- Legal advice should be taken to verify fixtures/fittings, planning, alterations and/or lease details
- Appliances & services are untested, dimensions are approximate and floor plans are not to scale
- Through a Homewise Home For Life Plan people aged 60+ can secure this property for up to 59% less, by purchasing a Lifetime Lease.

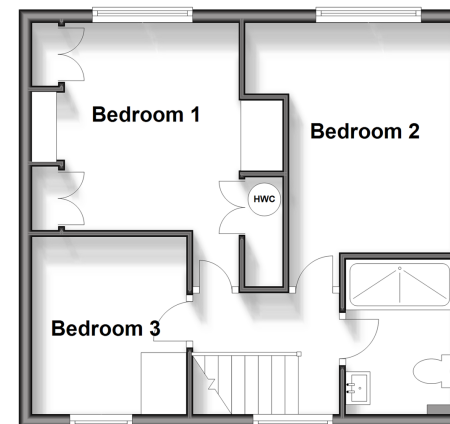
### Ground Floor

Approx. 54.7 sq. metres (588.5 sq. feet)



### First Floor

Approx. 38.4 sq. metres (412.9 sq. feet)



21613444/20240924/NF1/JB1