



Price
£250,000

**Share of
Freehold**

1x  1x  1x 

**London Road, Reigate,
Surrey, RH2**

cubitt & west
Helping you move forwards



Main features

- Chain free apartment set within an attractive character building
- Modern kitchen & fitted bathroom
- Allocated parking to the rear & communal garden
- Walking distance of the mainline train station, Reigate town centre & Priory Park
- No onward chain

Accommodation

GROUND FLOOR

Entrance Hall

Living Room: 13'8 x 11'9 (4.17m x 3.58m)

Kitchen: 8'0 x 6'6 (2.44m x 1.98m) plus 4'3 x 2'8 (1.30m x 0.81m)

Bedroom: 11'7 x 9'4 (3.53m x 2.85m)

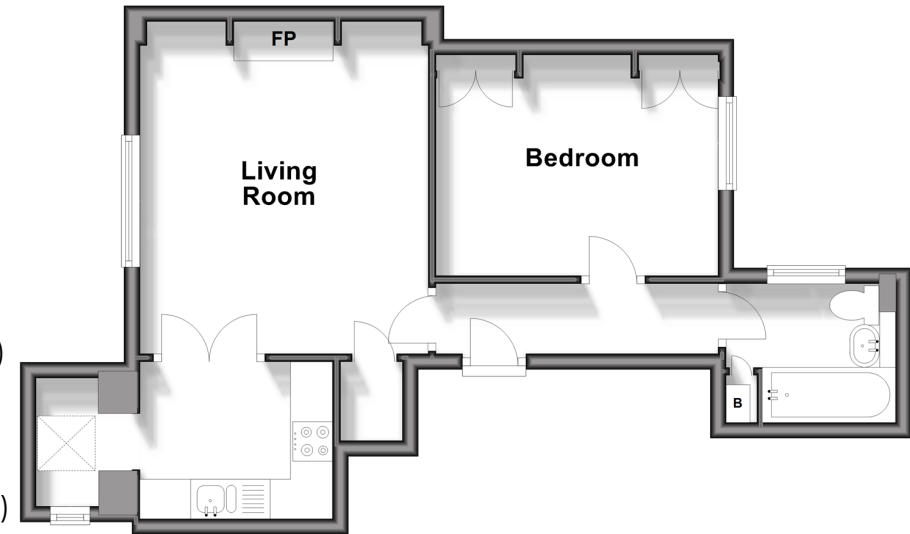
Bathroom: 7'1 x 5'9 (2.16m x 1.75m)

OUTSIDE

Allocated Parking

Communal Gardens

Ground Floor
Approx. 41.1 sq. metres (442.8 sq. feet)



Call Reigate - 01737 222020 ■ cubittandwest.co.uk

- Legal advice should be taken to verify fixtures/fittings, planning, alterations and/or lease details
- Appliances & services are untested, dimensions are approximate and floor plans are not to scale



21613398/20240906/KH/KH