



Guide Price
£500,000

Freehold

3x  1x  2x 

**Sandcross Lane,
Reigate, Surrey, RH2**

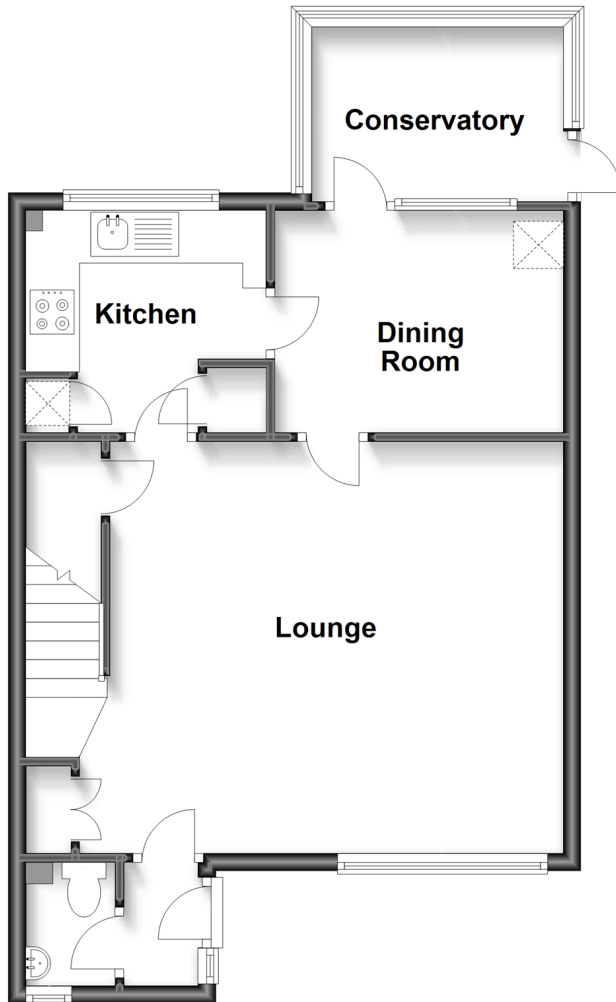
OVER 60?

Secure this property
for up to **59% less!**

cubitt & west
Helping you move forwards

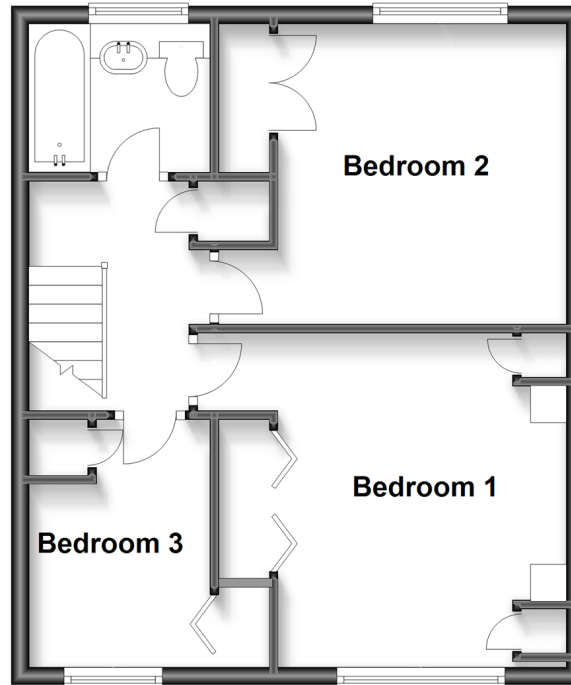
Ground Floor

Approx. 53.4 sq. metres (575.2 sq. feet)



First Floor

Approx. 44.5 sq. metres (479.4 sq. feet)



Accommodation

GROUND FLOOR

Entrance Porch

Cloakroom

Lounge: 20'0 x 15'6 (6.10m x 4.73m)

Dining Room: 10'8 x 9'0 (3.25m x 2.75m)

Kitchen: 9'0 x 8'3 (2.75m x 2.52m)

Conservatory: 9'5 x 6'5 (2.87m x 1.96m)

FIRST FLOOR

Landing

Bedroom 1: 12'9 x 11'0 (3.89m x 3.36m)

Bedroom 2: 11'2 x 10'9 (3.41m x 3.28m)

Bedroom 3: 9'0 x 6'9 (2.75m x 2.06m)

Bathroom: 6'9 x 5'6 (2.06m x 1.68m)

OUTSIDE

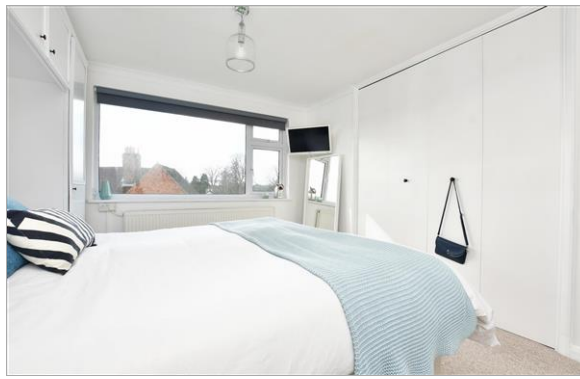
Side Garden

Front Garden

Rear Garden

Garage

Off Road Parking



Main features

- Price Guide £500,000-£525,000
- A spacious & extended end of terrace house
- Lounge, dining room & conservatory
- Corner position, with front, side & rear garden, garage & parking
- Scope for side extension, subject to planning permission
- Close to superb schools, easy access to Priory Park & Reigate town centre

Nearest Schools

Primary Schools: Sandcross School 0.2 miles, Reigate Priory Community Junior School 1.1 miles, St John's Primary 2.0 miles
Secondary Schools: Reigate School 1.2 miles, Reigate Grammar School 1.9 miles, Dunottar School 2.0 miles

Transport Information

Train Stations: Reigate 2.1 miles, Earlswood 2.4 miles, Betchworth 2.7 miles

Address

Sandcross Lane, Reigate, Surrey, RH2

Directions

For directions to this property please contact us.



cubitt&west
Helping you move forwards

Call Reigate Branch 01737 222020 ■ [cubittandwest.co.uk](https://www.cubittandwest.co.uk)



■ Legal advice should be taken to verify fixtures/fittings, planning, alterations and/or lease details ■ Appliances & services are untested, dimensions are approximate and floor plans are not to scale
■ Through a Homewise Home For Life Plan people aged 60+ can secure this property for up to 59% less, by purchasing a Lifetime Lease.



21613023/20240923/NF1/JB1