



Guide Price
£550,000

Freehold

3x  1x  1x 

**Burnham Drive, Reigate,
Surrey, RH2**

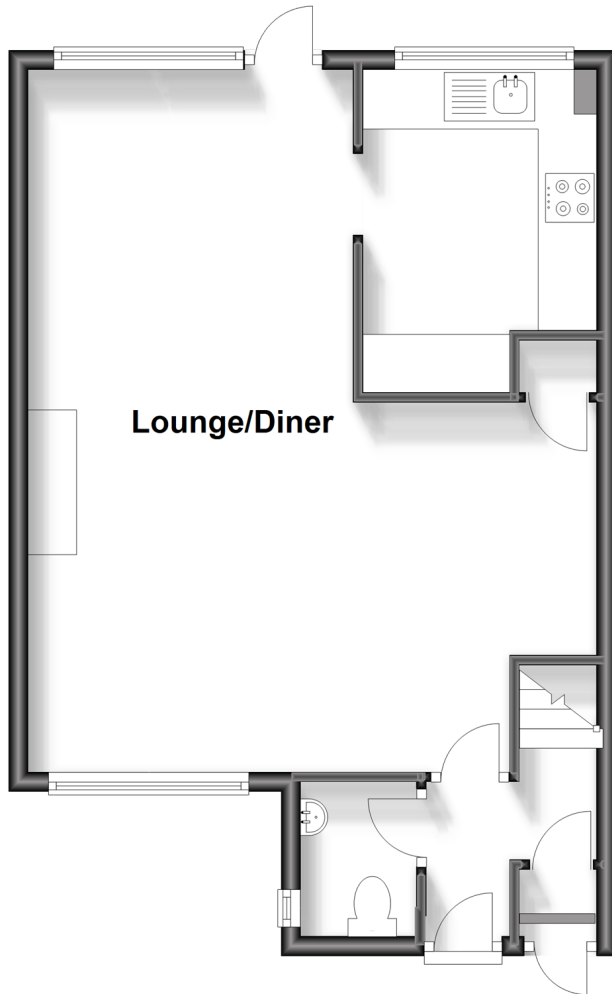
OVER 60?

Secure this property
for up to **59% less!**

cubitt & west
Helping you move forwards

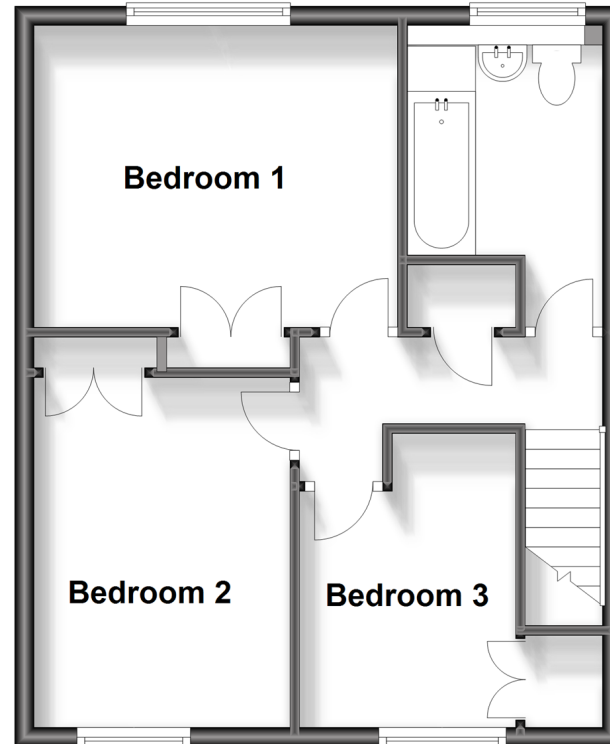
Ground Floor

Approx. 47.4 sq. metres (509.7 sq. feet)



First Floor

Approx. 42.2 sq. metres (454.3 sq. feet)



Accommodation

GROUND FLOOR

Entrance Hall

Lounge/Diner: (L-shaped) 19'2 x 12'5
(5.85m x 3.79m) plus 11'2 x 10'11 (3.41m x
3.33m)

Kitchen: 10'7 x 7'9 (3.23m x 2.36m)

Cloakroom: 5'1 x 3'11 (1.55m x 1.19m)

FIRST FLOOR

Landing

Bedroom 1: 12'4 x 10'1 (3.76m x 3.08m)

Bedroom 2: 12'0 x 9'1 (3.66m x 2.77m)

Bedroom 3: 10'8 x 6'8 (3.25m x 2.03m)

Bathroom: 10'0 x 6'7 (3.05m x 2.01m)

OUTSIDE

Front & Rear Garden

Garage-en-Bloc



Main features

- Price Guide £550,000-£575,000
- Spacious, recently refurbished end of terrace house in a quiet cul-de-sac
- Modern fitted kitchen with built in appliances
- Oak floors in the lounge/diner & solid wood doors
- Short walk to train station, town centre & excellent schools
- Garage-en-bloc, front & rear garden

Nearest Schools

Primary Schools: Holmesdale Community Infant School 0.6 miles, Reigate Priory Community Junior School 0.7 miles, St Joseph's Catholic Primary, Redhill 1.7 miles
Secondary Schools: Reigate Grammar School 0.9 miles, Dunottar School 1.6 miles, St Bede's School 1.8 miles

Transport Information

Train Stations: Reigate 0.4 miles, Redhill 2.4 miles, Earlswood 2.4 miles

Address

Burnham Drive, Reigate, Surrey, RH2

Directions

For directions to this property please contact us.



cubitt&west
Helping you move forwards

Call Reigate Branch 01737 222020 ■ [cubittandwest.co.uk](https://www.cubittandwest.co.uk)



- Legal advice should be taken to verify fixtures/fittings, planning, alterations and/or lease details
- Appliances & services are untested, dimensions are approximate and floor plans are not to scale
- Through a Homewise Home For Life Plan people aged 60+ can secure this property for up to 59% less, by purchasing a Lifetime Lease.



21613184/20231220/NF1/KH