



Price
£725,000

Freehold

3x  1x  2x 

Hilltop Road, Reigate,
Surrey, RH2

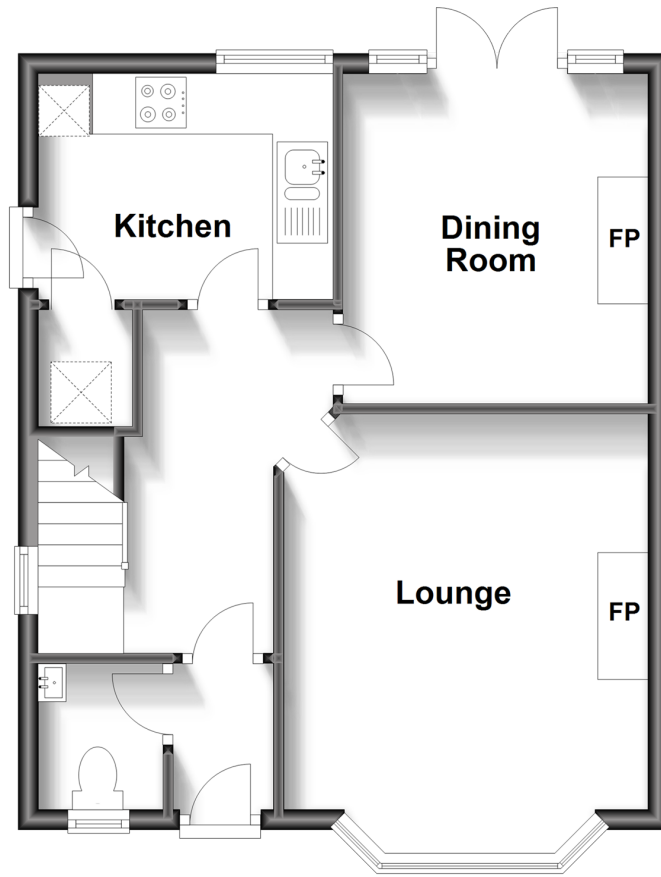
OVER 60?

Secure this property
for up to **59% less!**

cubitt & west
Helping you move forwards

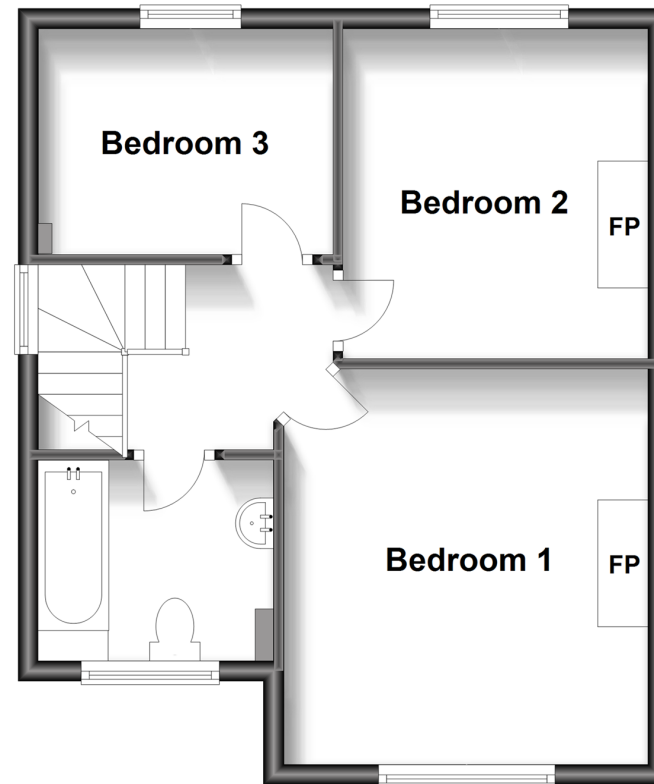
Ground Floor

Approx. 44.2 sq. metres (475.9 sq. feet)



First Floor

Approx. 41.4 sq. metres (445.2 sq. feet)



Accommodation

GROUND FLOOR

Entrance Hall

Lounge: 14'3 into bay x 11'10 (4.35m x 3.61m)

Dining Room: 10'7 x 9'11 (3.23m x 3.02m)

Kitchen: 9'6 x 7'4 (2.90m x 2.24m)

Cloakroom

FIRST FLOOR

Landing

Bedroom 1: 12'9 x 11'10 (3.89m x 3.61m)

Bedroom 2: 10'8 x 9'11 (3.25m x 3.02m)

Bedroom 3: 9'6 x 7'5 (2.90m x 2.26m)

Bathroom: 7'5 x 6'6 (2.26m x 1.98m)

OUTSIDE

Front Garden

Rear Garden

Detached Garage



Main features

- An attractive Mock Tudor facade house
- Set within a quiet cul-de-sac
- Bright & airy accommodation
- Underfloor heating in the bathroom
- Long rear garden & detached garage
- Potential to extend, subject to planning permission
- Central location, close to town, Priory Park & sought after schools

Nearest Schools

Primary Schools: Reigate Priory Community Junior School 0.9 miles, St Joseph's Catholic Primary, Redhill 1.4 miles, St John's Primary 1.4 miles
Secondary Schools: Reigate Grammar School 1.0 miles, Dunottar School 1.1 miles, Reigate School 1.5 miles

Transport Information

Train Stations: Reigate 0.8 miles, Earlswood 1.1 miles, Redhill 1.5 miles

Address

Hilltop Road, Reigate, Surrey, RH2

Directions

For directions to this property please contact us.



cubitt&west
Helping you move forwards

Call Reigate Branch 01737 222020 ■ [cubittandwest.co.uk](https://www.cubittandwest.co.uk)



- Legal advice should be taken to verify fixtures/fittings, planning, alterations and/or lease details
- Appliances & services are untested, dimensions are approximate and floor plans are not to scale
- Through a Homewise Home For Life Plan people aged 60+ can secure this property for up to 59% less, by purchasing a Lifetime Lease.

EPC RATING	CURRENT:	POTENTIAL:
	D(57)	C(74)

21613164/20231123/NF1/KH