



Guide Price
£450,000

Freehold

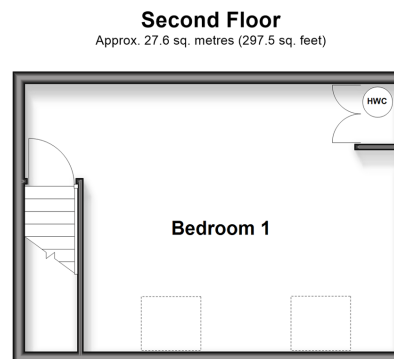
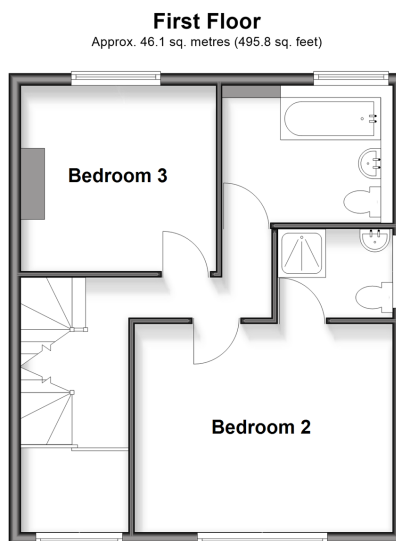
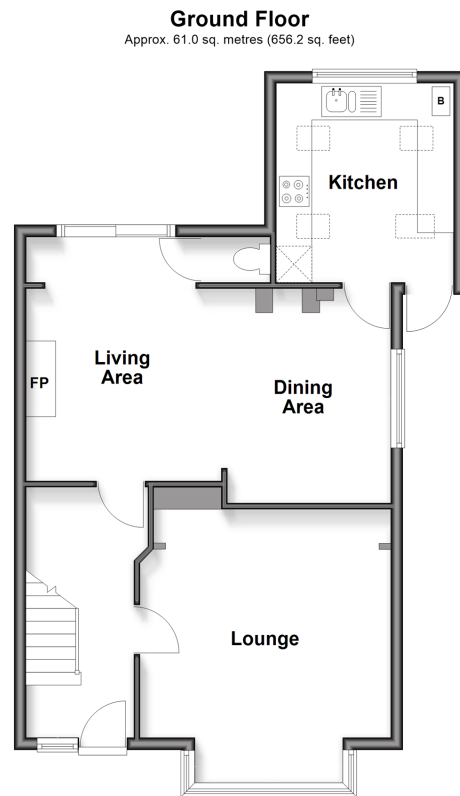
3x  2x  2x 

**Godstone Road, Kenley,
Surrey, CR8**

OVER 60?

Secure this property
for up to **59% less!**

cubitt&west
Helping you move forwards



Accommodation

GROUND FLOOR

Entrance Hall

Lounge: 16'9 x 13'11 (5.11m x 4.24m)

Living Area: 13'9 x 10'5 (4.19m x 3.18m)

Dining Area: 11'8 x 9'1 (3.56m x 2.77m)

Kitchen: 10'9 x 9'11 (3.28m x 3.02m)

Cloakroom

FIRST FLOOR

Landing

Bedroom 2: 13'10 x 11'4 (4.22m x 3.46m)

En-Suite Shower Room

Bedroom 3: 10'6 x 10'5 (3.20m x 3.18m)

Bathroom

Study Area: 5'9 x 4'4 (1.75m x 1.32m)

SECOND FLOOR

Bedroom 1: 20'3 x 14'6 (6.18m x 4.42m)

OUTSIDE

Front & Rear Gardens

Garage En-bloc



Main features

- **CHAIN FREE** - Elevated period semi-detached house with garage en-bloc to rear
- Arranged over 3 floors with family bathroom and en-suite shower room to bedroom 2
- Good size kitchen with lovely vaulted ceiling
- Ideal home to put your own stamp on
- Walking distance to to Kenley, Purley and Riddlesdown stations
- Good schools for all ages locally



Nearest Schools

Primary Schools: Harris Primary 0.1 miles, Beaumont Primary 0.6 miles, The Hayes Primary 0.8 miles
Secondary Schools: Riddlesdown Collegiate 0.7 miles, Thomas More Catholic School 1.1 miles, Tudor Lodge School 1.4 miles



Transport Information

Train Stations: Kenley 0.3 miles, Riddlesdown 0.4 miles, Purley 0.6 miles



Address

Godstone Road, Kenley, Surrey, CR8



Directions

For directions to this property please contact us.



cubitt&west
Helping you move forwards

Call Purley Branch 020 8660 8882 ■ cubittandwest.co.uk



- Legal advice should be taken to verify fixtures/fittings, planning, alterations and/or lease details
- Appliances & services are untested, dimensions are approximate and floor plans are not to scale
- Through a Homewise Home For Life Plan people aged 60+ can secure this property for up to 59% less, by purchasing a Lifetime Lease



21511822/20260120/NH/NH