



Guide Price
£259,000

Leasehold

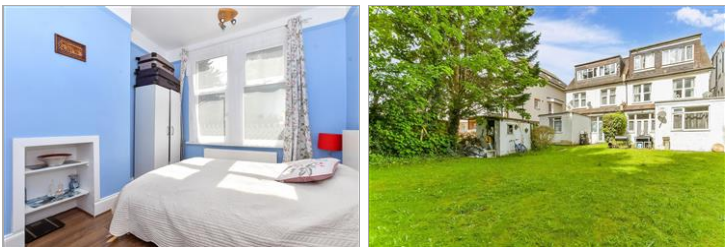
2x  1x  1x 

**Brighton Road, Purley,
Surrey, CR8**

OVER 60?

Secure this property
for up to **59% less!**

cubitt&west
Helping you move forwards



Main features

- First floor apartment presented in excellent condition
- Communal gardens and allocated parking
- Walking distance to Purley & Coulsdon town centres and short stroll to 4 stations
- Feature fire places, fitted wardrobes to bedroom 1

Accommodation

FIRST FLOOR

Entrance Hall

Kitchen : 8'10 x 6'10 (2.69m x 2.08m)

Lounge : 13'8 x 12'11 (4.17m x 3.94m)

Bedroom 1: 12'6 x 9'8 (3.81m x 2.95m)

Bedroom 2: 12'4 x 10'7 up to fitted wardrobes (3.76m x 3.23m)

Bathroom: 7'11 x 5'8 (2.41m x 1.73m)

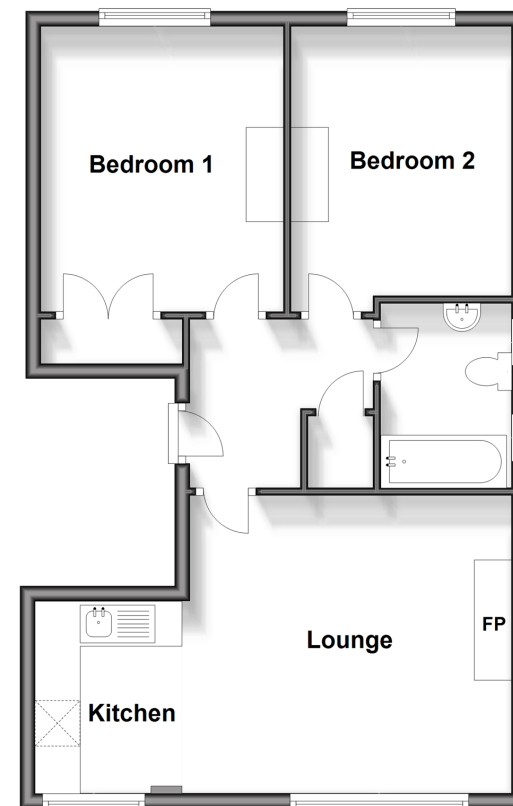
OUTSIDE

Communal Garden

Allocated Parking Space

First Floor

Approx. 58.4 sq. metres (628.8 sq. feet)



Call Purley - 020 8660 8882 ■ cubittandwest.co.uk

- Legal advice should be taken to verify fixtures/fittings, planning, alterations and/or lease details
- Appliances & services are untested, dimensions are approximate and floor plans are not to scale
- Through a Homewise Home For Life Plan people aged 60+ can secure this property for up to 59% less, by purchasing a Lifetime Lease.



21511100/20250527/KV/KV