



**Price**

**£275,000**

**Leasehold**

2x  1x  1x 

**Rydal Close, Purley,  
Surrey, CR8**

**OVER 60?**

Secure this property  
for up to **59% less!**

**cubitt&west**  
Helping you move forwards





## Main features

- Chain free ground floor maisonette in cul-de-sac location
- Fitted wardrobes to bedroom 1
- Private rear garden
- Recently decorated - ready to move straight into
- Driveway
- Walking distance to Riddlesdown station

## Accommodation

### GROUND FLOOR

#### Entrance Hall

Lounge/Diner: 20'1 x 15'9 (6.13m x 4.80m)

Kitchen: 12'1 x 8'8 (3.69m x 2.64m)

Bedroom 1: 11'8 x 11'4 (3.56m x 3.46m)

Bedroom 2: 12'7 x 9'8 (3.84m x 2.95m)

Shower Room: 9'5 x 4'5 (2.87m x 1.35m)

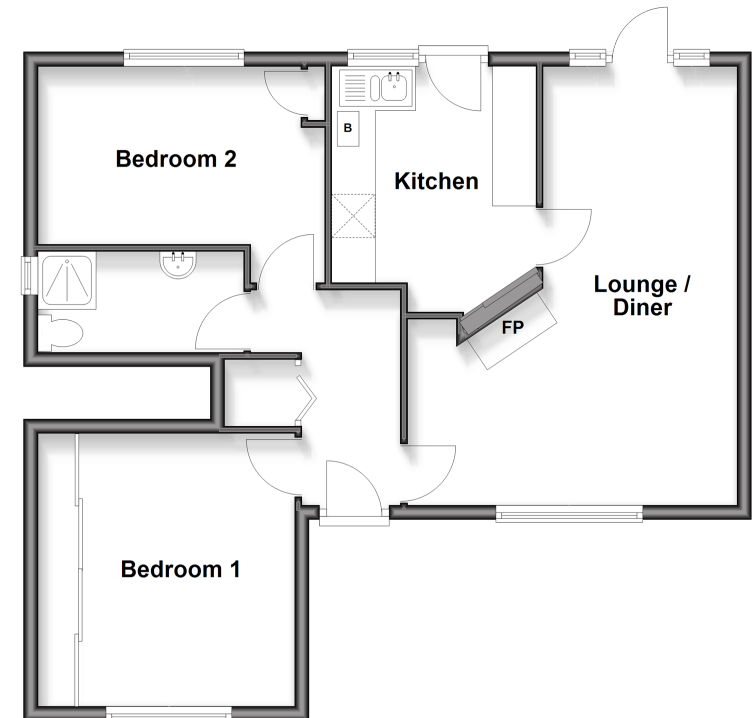
### OUTSIDE

Driveway

Private Rear Garden

### Ground Floor

Approx. 65.1 sq. metres (701.1 sq. feet)



**Call Purley - 020 8660 8882 ■ [cubittandwest.co.uk](http://cubittandwest.co.uk)**

- Legal advice should be taken to verify fixtures/fittings, planning, alterations and/or lease details
- Appliances & services are untested, dimensions are approximate and floor plans are not to scale
- Through a Homewise Home For Life Plan people aged 60+ can secure this property for up to 59% less, by purchasing a Lifetime Lease.



21511598/20250402/DI/KV