



OVER 60?

Secure this property
for up to **59% less!**

Price

£325,000

Leasehold

1x  1x  1x 

Poirer House, Purley

Rise, Purley, Surrey, CR8

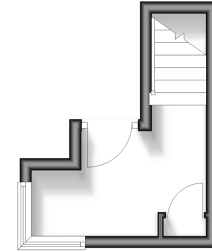
cubitt&west
Helping you move forwards



Main features

- Stunning second floor open plan apartment
- Great size rooms flooded with natural light, lots of storage
- Luxury bathroom with bath and large walk in shower
- Modern kitchen with integrated appliances
- Short walk to Purley station

First Floor
Approx. 6.6 sq. metres (71.5 sq. feet)



Accommodation

SECOND FLOOR

Hallway

Kitchen/Lounge/Diner: 19'3 x 18'1
(5.87m x 5.52m)

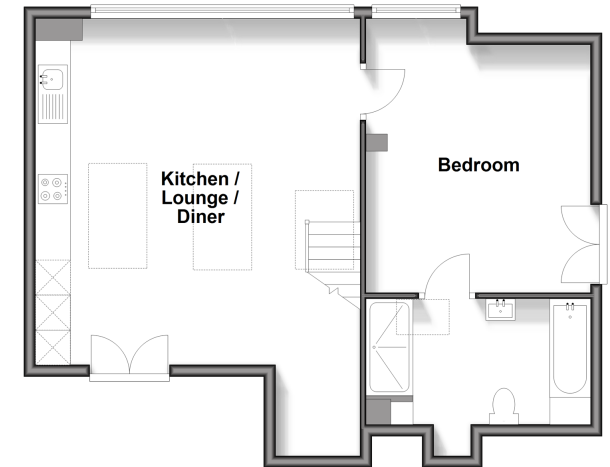
Bedroom: 13'7 x 11'5 (4.14m x 3.48m)

Bathroom: 12'5 x 6'9 (3.79m x 2.06m)

OUTSIDE

Allocated Parking Space
Communal Gardens

Second Floor
Approx. 61.6 sq. metres (663.2 sq. feet)



Call Purley - 020 8660 8882 ■ cubittandwest.co.uk

- Legal advice should be taken to verify fixtures/fittings, planning, alterations and/or lease details
- Appliances & services are untested, dimensions are approximate and floor plans are not to scale
- Through a Homewise Home For Life Plan people aged 60+ can secure this property for up to 59% less, by purchasing a Lifetime Lease.



21511519/20250201/DI/TLA