



Guide Price
£385,000

Freehold

3x  1x  1x 

**Famet Gardens, Kenley,
Surrey, CR8**

OVER 60?

Secure this property
for up to **59% less!**

cubitt & west
Helping you move forwards



Main features

- Elevated terraced house on Purley/Kenley borders
- Modern kitchen/diner and separate lounge
- Presented in great condition
- Walking distance to Kenley & Riddlesdown stations
- Good local schools for all ages

Accommodation

GROUND FLOOR

Hallway

Lounge: 13'6 x 9'0 (4.12m x 2.75m)

Kitchen/Diner: 14'3 x 11'3 (4.35m x 3.43m)

FIRST FLOOR

Landing

Bedroom 1: 11'3 x 9'2 (3.43m x 2.80m)

Bedroom 2: 11'1 x 9'2 (3.38m x 2.80m)

Bedroom 3: 8'3 x 5'4 (2.52m x 1.63m)

Bathroom

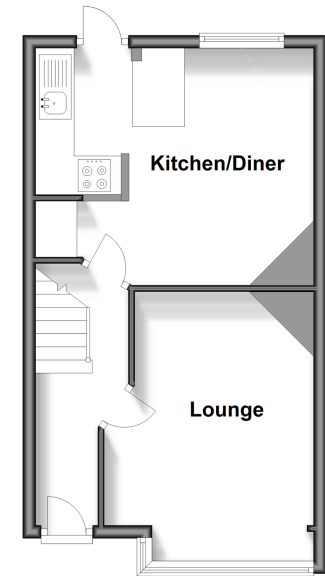
OUTSIDE

Front Garden

Rear Garden

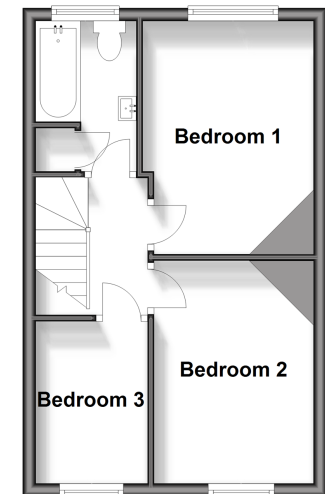
Ground Floor

Approx. 33.4 sq. metres (359.8 sq. feet)



First Floor

Approx. 31.1 sq. metres (334.3 sq. feet)



Call Purley - 020 8660 8882 ■ cubittandwest.co.uk

- Legal advice should be taken to verify fixtures/fittings, planning, alterations and/or lease details
- Appliances & services are untested, dimensions are approximate and floor plans are not to scale
- Through a Homewise Home For Life Plan people aged 60+ can secure this property for up to 59% less, by purchasing a Lifetime Lease.



21511494/20250210/KV/TLA