



Guide Price

£675,000

Freehold

4x  1x  3x 

**Fairfield Way, Coulsdon,
Surrey, CR5**

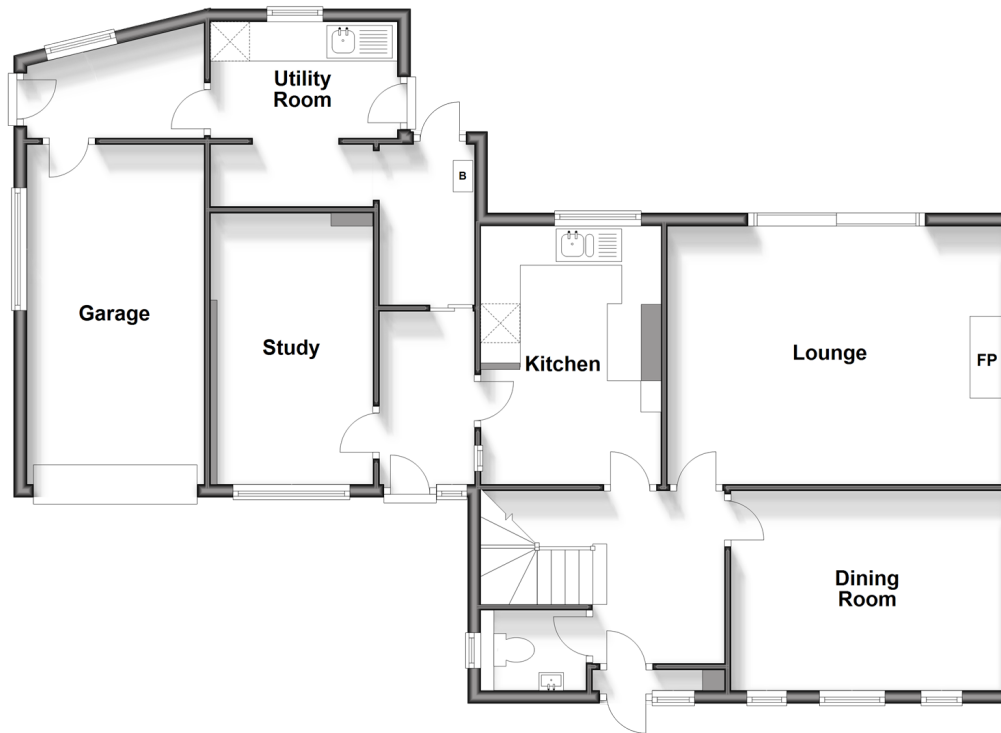
OVER 60?

Secure this property
for up to **59% less!**

cubitt&west
Helping you move forwards

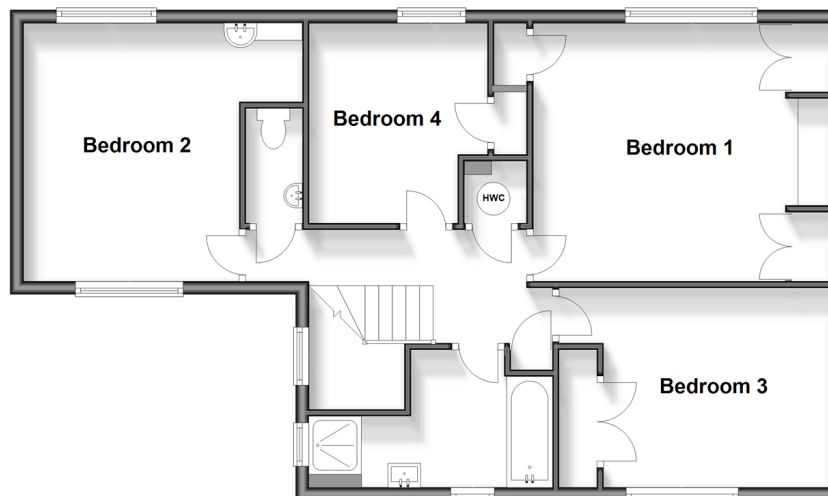
Ground Floor

Approx. 102.0 sq. metres (1097.5 sq. feet)



First Floor

Approx. 73.8 sq. metres (794.9 sq. feet)



Accommodation

GROUND FLOOR

Entrance Hall

Cloakroom

Lounge: 16'9 x 13'6 (5.11m x 4.12m)

Dining Room: 13'5 x 10'7 (4.09m x 3.23m)

Kitchen: 13'8 x 9'5 (4.17m x 2.87m)

Utility Room: 9'6 x 8'9 (2.90m x 2.67m)

Study: 14'0 x 8'2 (4.27m x 2.49m)

FIRST FLOOR

Landing

Bedroom 1: 13'8 x 13'4 (4.17m x 4.07m)

Bedroom 2: 13'8 x 12'2 (4.17m x 3.71m)

Bedroom 3: 13'6 x 10'7 (4.12m x 3.23m)

Bedroom 4: 10'5 x 8'9 (3.18m x 2.67m)

Bathroom: 12'3 x 6'6 (3.74m x 1.98m)

Separate Toilet

OUTSIDE

Garage

Driveway

Front Garden

Rear Garden



Main features

- Extended semi-detached family home with garage & off street parking on large corner plot
- Downstairs cloakroom, utility room and study
- Walking distance to several schools including Woodcote Primary & Woodcote High School
- Pretty rear garden with patio area, mature trees and shrubs
- Potential to extend (subject to planning permission)



Nearest Schools

Primary Schools: Woodcote Primary 0.1 miles, Beaumont Primary 0.8 miles, Smitham Primary 1.0 miles Secondary Schools: Woodcote High School 0.2 miles, Lodge School 0.7 miles, Tudor Lodge School 1.1 miles



Transport Information

Train Stations: Coulsdon 0.4 miles, Reedham 0.6 miles, Woodmansterne 0.9 miles



Address

Fairfield Way, Coulsdon, Surrey, CR5



Directions

For directions to this property please contact us.



cubitt&west
Helping you move forwards

Call Purley Branch 020 8660 8882 ■ cubittandwest.co.uk



■ Legal advice should be taken to verify fixtures/fittings, planning, alterations and/or lease details ■ Appliances & services are untested, dimensions are approximate and floor plans are not to scale
■ Through a Homewise Home For Life Plan people aged 60+ can secure this property for up to 59% less, by purchasing a Lifetime Lease.



21511374/20250125/D1/KV