



Guide Price
£280,000

Leasehold

2x  1x  1x 

**Kingsdown Avenue,
South Croydon, Surrey,
CR2**

OVER 60?

Secure this property
for up to **59% less!**

cubitt & west
Helping you move forwards



Main features

- Second floor flat with balcony on Purley/South Croydon borders
- Walking distance to 3 stations - ideal if you commute
- Presented in great condition
- Modern kitchen & bathroom
- Stunning views to rear
- Lots of free off street parking

Accommodation

SECOND FLOOR

Hallway

Lounge/Diner: 18'4 x 11'7 (5.59m x 3.53m)

Balcony

Kitchen: 14'6 x 6'1 (4.42m x 1.86m)

Bedroom 1: 14'1 x 8'8 (4.30m x 2.64m)

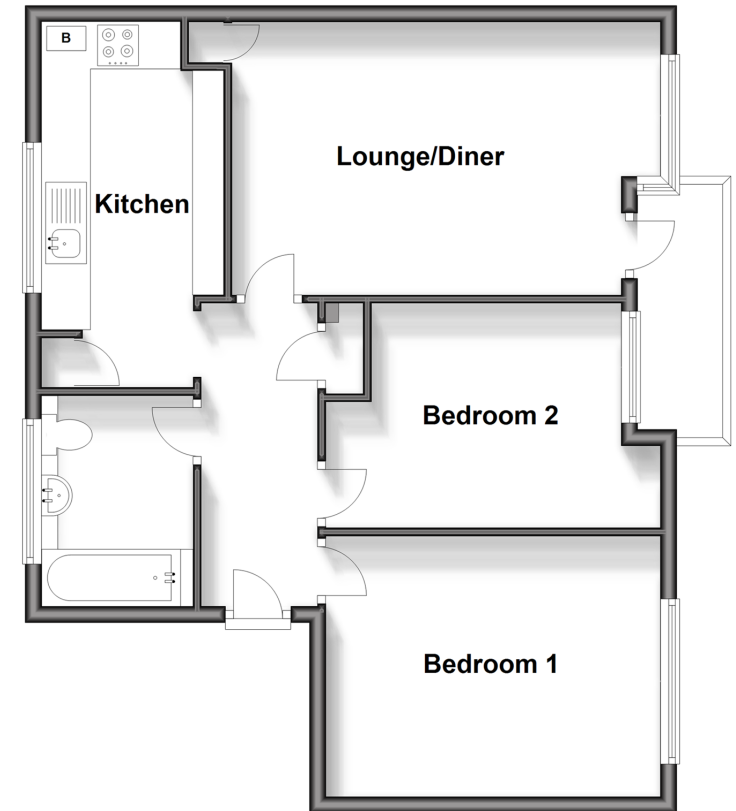
Bedroom 2: 13'5 x 10'3 (4.09m x 3.13m)

Bathroom: 7'9 x 7'0 (2.36m x 2.14m)

OUTSIDE

Communal Grounds

Second Floor
Approx. 61.7 sq. metres (663.8 sq. feet)



Call Purley - 020 8660 8882 ■ cubittandwest.co.uk

- Legal advice should be taken to verify fixtures/fittings, planning, alterations and/or lease details
- Appliances & services are untested, dimensions are approximate and floor plans are not to scale
- Through a Homewise Home For Life Plan people aged 60+ can secure this property for up to 59% less, by purchasing a Lifetime Lease.



21511425/20241102/DI/MS