



Guide Price
£295,000

**Share of
Freehold**

2x  2x  1x 

**Parkview, Christchurch
Road, Purley, Surrey,
CR8**

OVER 60?

Secure this property
for up to **59% less!**

cubitt&west
Helping you move forwards



Main features

- Chain free first floor apartment with park view and lift access
- Store room, garage and good size balcony & Share of Freehold
- Walking distance to Purley station and town centre
- Bathroom, separate shower room and fitted wardrobes to both double bedrooms

Accommodation

FIRST FLOOR

Entrance Hall

Lounge/Diner: 26'5 x 12'0 (8.06m x 3.66m)

Balcony

Kitchen: 9'6 x 8'1 (2.90m x 2.47m)

Bedroom 1: 12'0 x 9'7 (3.66m x 2.92m)

Bedroom 2: 12'0 x 10'0 (3.66m x 3.05m)

Bathroom

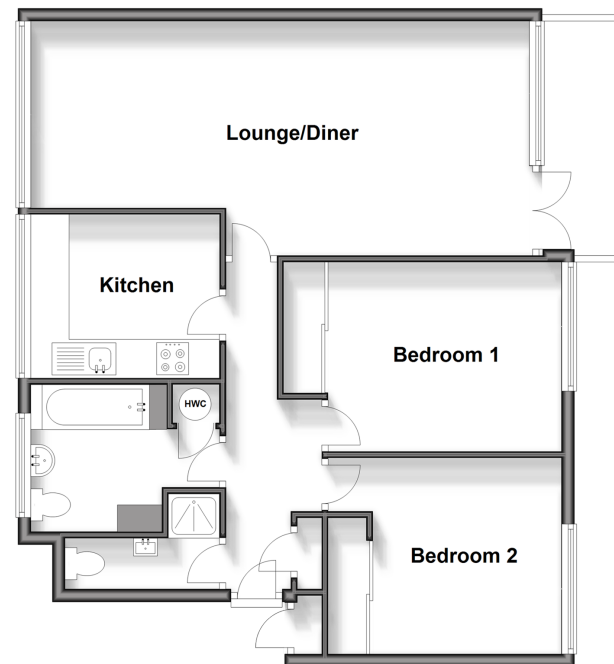
Shower Room

OUTSIDE

Garage

Off Street Parking

First Floor
Approx. 75.1 sq. metres (808.9 sq. feet)



Call Purley - 020 8660 8882 ■ cubittandwest.co.uk

- Legal advice should be taken to verify fixtures/fittings, planning, alterations and/or lease details
- Appliances & services are untested, dimensions are approximate and floor plans are not to scale
- Through a Homewise Home For Life Plan people aged 60+ can secure this property for up to 59% less, by purchasing a Lifetime Lease.



21511200/20250227/DI/MS