



Guide Price
£375,000

Freehold

3x  1x  1x 

**Godstone Road, Purley,
Surrey, CR8**

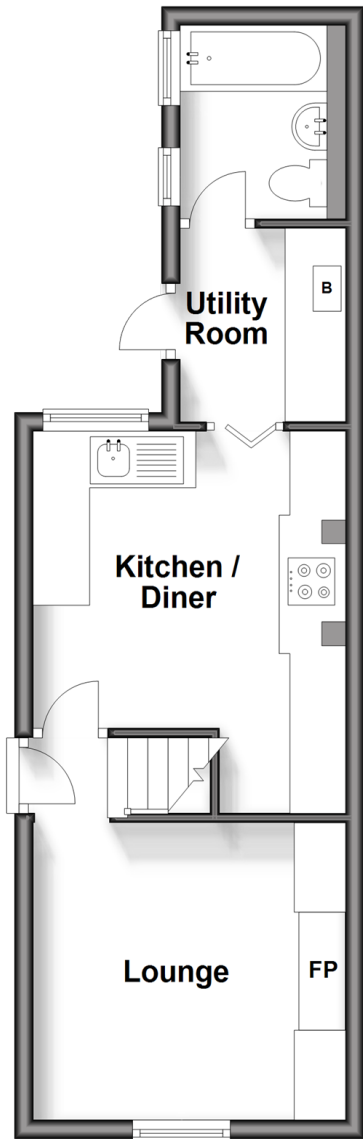
OVER 60?

Secure this property
for up to **59% less!**

cubitt & west
Helping you move forwards

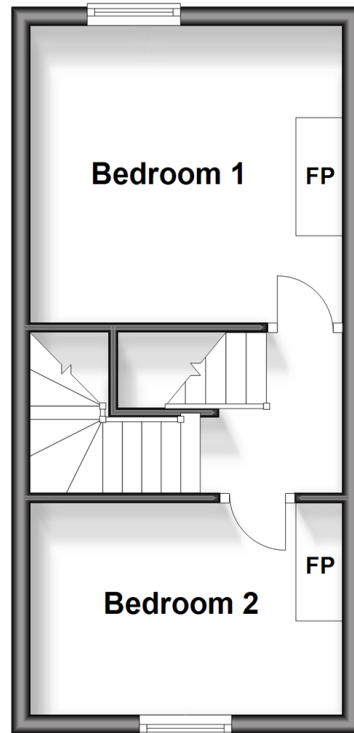
Ground Floor

Approx. 32.1 sq. metres (345.3 sq. feet)



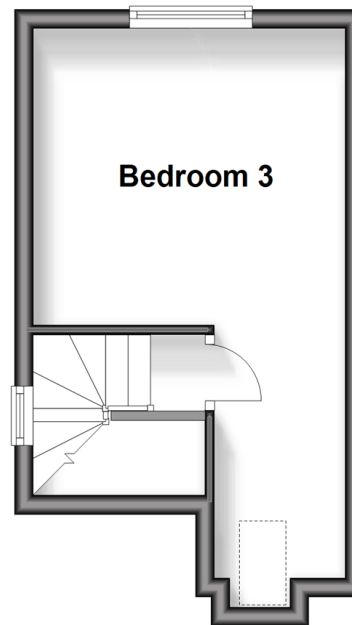
First Floor

Approx. 24.5 sq. metres (263.2 sq. feet)



Second Floor

Approx. 18.0 sq. metres (194.1 sq. feet)



Accommodation

GROUND FLOOR

Hallway

Lounge: 11'3 x 10'6 (3.43m x 3.20m)

Kitchen/Diner: 13'9 x 10'7 (4.19m x 3.23m)

Utility Room: 6'8 x 6'3 (2.03m x 1.91m)

Bathroom: 6'6 x 5'7 (1.98m x 1.70m)

FIRST FLOOR

Landing

Bedroom 1: 11'10 x 10'6 (3.61m x 3.20m)

Bedroom 2: 11'1 x 7'4 (3.38m x 2.24m)

SECOND FLOOR

Bedroom 3: 16'1 x 10'1 (4.91m x 3.08m)

OUTSIDE

Front Garden

Rear Garden

Main features

- **Stunning Victorian end of terrace 'cottage' set over three floors**
- **Lots of period features, high ceilings and beautiful log burner in the lounge**
- **Good size kitchen/diner and handy utility room**
- **Well kept low maintenance rear garden with flat tiers and patios**
- **Walking distance to Kenley train station, shops and various good schools for all ages**



Nearest Schools

Primary Schools: Kenley Primary 0.3 miles, Whyteleafe Primary 0.8 miles, Atwood Primary 0.8 miles Secondary Schools: Riddlesdown Collegiate 0.3 miles, Warlingham School 0.8 miles, Kingsdown Secondary School 1.0 miles



Transport Information

Train Stations: Kenley 0.6 miles, Whyteleafe 0.7 miles, Upper Warlingham 0.8 miles



Address

Godstone Road, Purley, Surrey, CR8



Directions

For directions to this property please contact us.

