



Price
£550,000

Freehold

4x  1x  1x 

**Burwood Avenue,
Kenley, Surrey, CR8**

OVER 60?

Secure this property
for up to **59% less!**

cubitt & west
Helping you move forwards



Main features

- Semi-detached home situated on a corner plot
- Popular family area due to excellent schools for all ages
- Off street parking for several cars
- Walking distance to Kenley station & local shops
- Potential to extend (subject to planning permission)

Accommodation

GROUND FLOOR

Entrance Hall

Lounge/Diner: 31'1" x 9'8" (9.48m x 2.95m)

Kitchen/Breakfast Room: 16'5" x 10'6" (5.01m x 3.20m)

Bedroom 4/Study: 11'5" x 6'9" (3.48m x 2.06m)

FIRST FLOOR

Bedroom 1: 15'2" x 9'9" (4.63m x 2.97m)

Bedroom 2: 14'4" x 9'7" (4.37m x 2.92m)

Bedroom 3: 10'5" x 6'5" (3.18m x 1.96m)

Bathroom: 6'7" x 6'2" (2.01m x 1.88m)

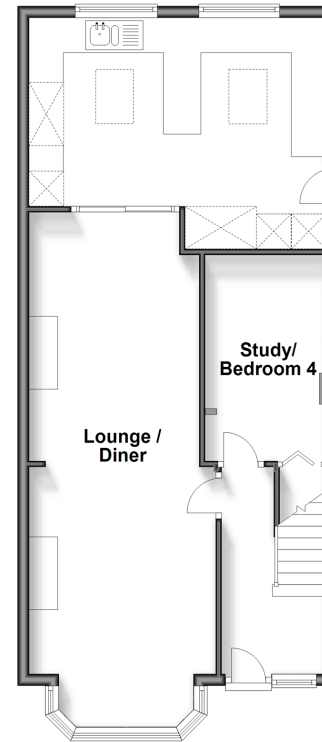
Separate Toilet

OUTSIDE

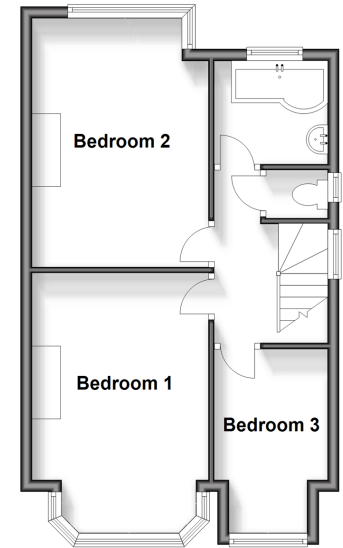
Driveway

Rear Garden

Ground Floor
Approx. 60.2 sq. metres (648.2 sq. feet)



First Floor
Approx. 42.4 sq. metres (456.2 sq. feet)



Call Purley - 020 8660 8882 ■ cubittandwest.co.uk

- Legal advice should be taken to verify fixtures/fittings, planning, alterations and/or lease details
- Appliances & services are untested, dimensions are approximate and floor plans are not to scale
- Through a Homewise Home For Life Plan people aged 60+ can secure this property for up to 59% less, by purchasing a Lifetime Lease.



21511359/20240824/DI/KV