



Price

£60,000

Leasehold

1x  1x  0x 

**Holmgrove House,
Brighton Road, Purley,
Surrey, CR8**

cubitt&west
Helping you move forwards



Main features

- Second floor retirement studio apartment for the over 55's
- CASH BUYERS ONLY
- Central Purley location
- Lift access & communal lounge
- Walking distance to Purley station, Tesco superstore & cafes
- Car park, pretty communal gardens

Accommodation

SECOND FLOOR

Hallway

Living/Dining/Bedroom Area: 23'4 x 10'1 (7.12m x 3.08m)

Kitchen: 8'1 x 5'6 (2.47m x 1.68m)

Bathroom

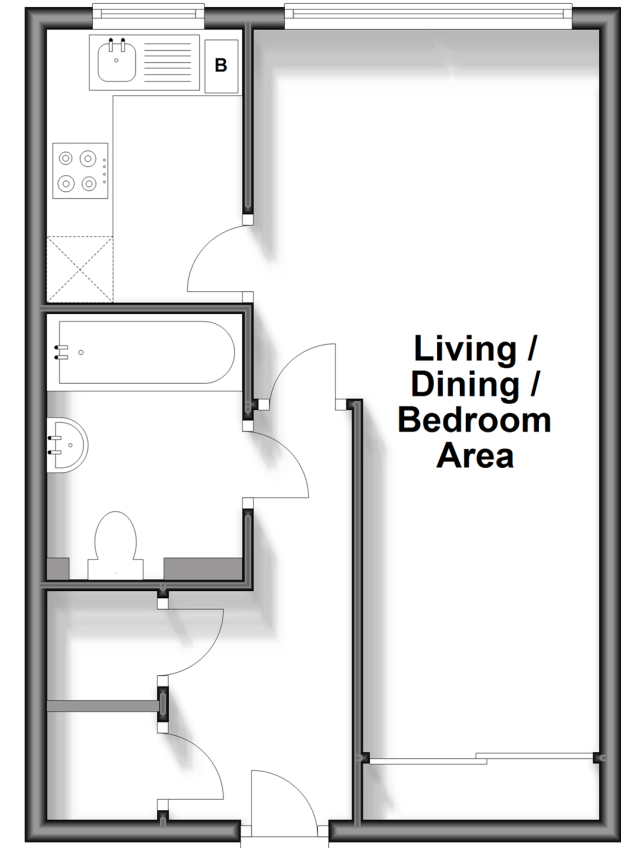
OUTSIDE

Resident's Parking

Communal Gardens

Second Floor

Approx. 35.9 sq. metres (386.5 sq. feet)



Call Purley - 020 8660 8882 ■ cubittandwest.co.uk

- Legal advice should be taken to verify fixtures/fittings, planning, alterations and/or lease details
- Appliances & services are untested, dimensions are approximate and floor plans are not to scale



21511306/20250617/KV/KV